



**Communication Technology**

Samuel Morse  
1837, 1888  
Make wireless communication possible.  
使无线通讯成为了可能。

**Power generation**

Edison  
1880, 1892  
Make electric current the city's infrastructure.  
使电流成为城市的基础设施。

**Assembly line**

Henry Ford  
1913, 1930  
Greatly accelerated industrial production.  
极大地加速了工业大生产。

**Railway Transportation**

George Stephenson  
1814, 1956  
International, inter-city transport costs have been significantly reduced.  
国际、城际的运输成本得到大幅降低。

**E-Commerce**

Alibaba; Jingdong  
1996, 2014  
E-commerce has greatly impacted the city's retail form.  
电子商务极大的冲击了城市的零售业态。

**Reinforced Concrete**

Joseph Monier  
1849, 1900  
Reinforced concrete technology makes the construction of tall buildings and long-span bridges possible, and the history of human architecture has entered a new era.  
钢筋混凝土技术使高层建筑与大跨度桥梁的建造成为可能，人类建筑史进入新纪元。

**Lift / Elevator**

Elisha Graves Otis  
1857, 1906  
Elevator technology makes skyscrapers possible, skyscrapers become a landmark of the big cities of the 20th century.  
电梯技术让摩天大楼成为可能，摩天大楼成为20世纪后大城市的标志物。

**Engine vehicle**

Karl Friedrich Benz  
1885, 1903  
The widespread adoption of cars has laid the road network as the basic skeleton in urban planning.  
汽车的大面积普及及奠定了路网作为城市规划中的基本骨架。

**Aeroplane**

Wright Brothers  
1903, 1960  
Reduce people's reliance on local resources, and greatly advance the process of global industrialization.  
降低了人们对本土资源的依赖，大大推进了全球工业化的进程。

**Internet Technology**

Microsoft  
1975, 1994  
Internet instant connection of all information.  
互联网即时连接一切信息。

**Sharing economy**

AirBnB; Uber; Weibo  
2009, 2016  
Sharing technology maximized, releasing a large amount of resources.  
共享技术使城市资源被资源。

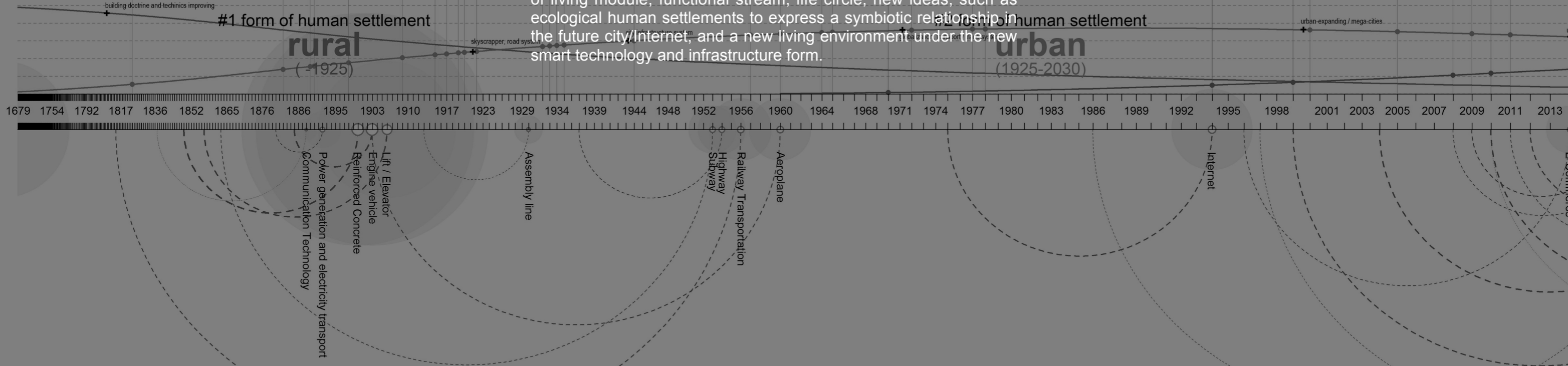
**NEXT FORM OF HUMAN SETTLEMENT**

**#1**

**Technology's EYE × 技术史之眼**



Through the reviewing of the technological invention history that affects the form of human settlement, we make insight into how the upcoming new technologies will dramatically affect the future human settlement form. Thus, as in the past, people from the rural areas to the urban habitat will enter a new form of living environment in the near future. In our scheme, this paper discusses the new form of living module, functional stream, life circle, new ideas, such as ecological human settlements to express a symbiotic relationship in the future city/Internet, and a new living environment under the new smart technology and infrastructure form.

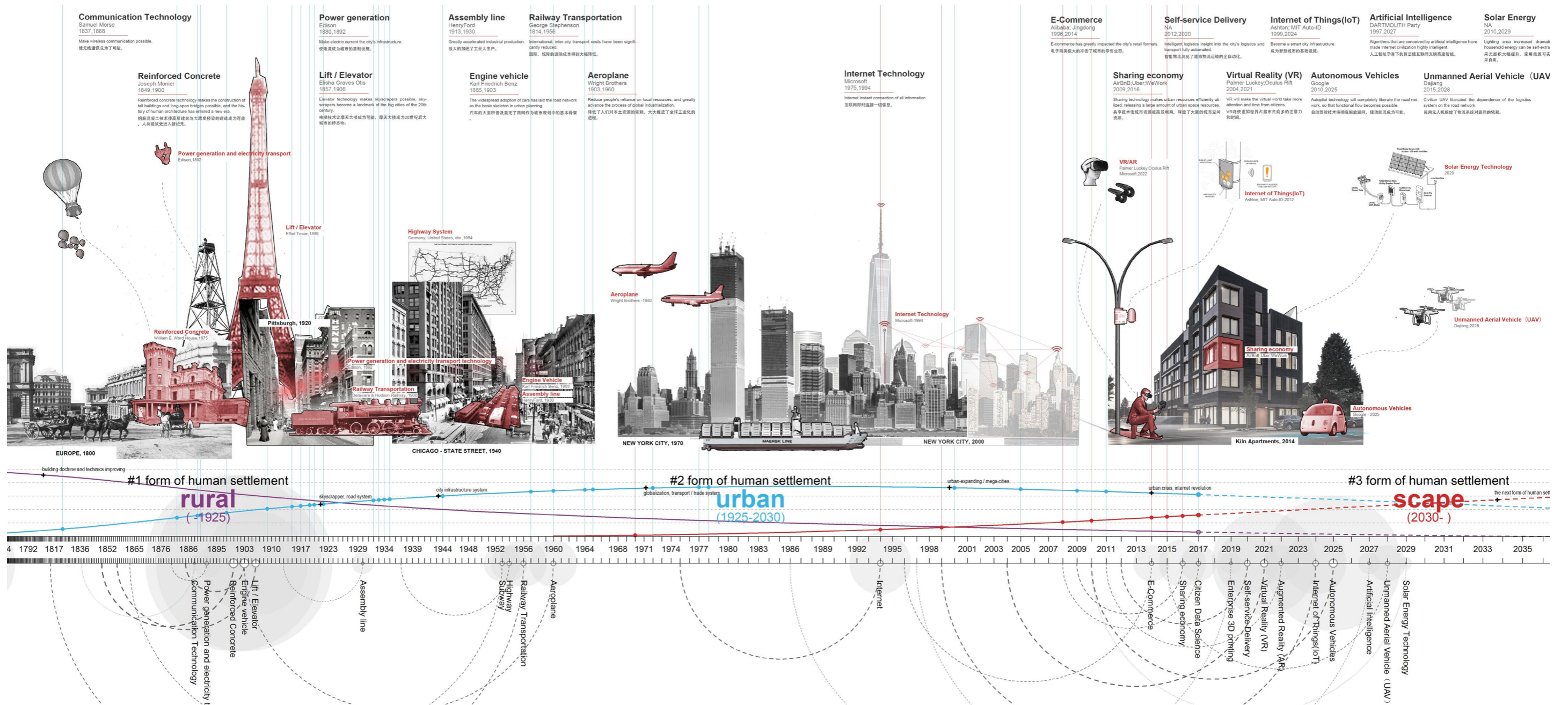


# Technology's EYE

## with living form's evolution

We have sorted out all the technical inventions that have made a significant impact on human settlement since 1700s and observed the evolution of human settlement for these three centuries. We came to the conclusion that human beings have so far undergone two typical types of human settlement, respectively, rural and urban. The typical difference between the two states is the maturity of the construction technology, the use of concrete, the emergence of elevators, such as the popularity of vehicles makes the road network system, the height of the building become a major urban skeleton and urban elements. And we can foresee a series of new technologies such as autonomous vehicle, smart logistics, VR, UAVs, artificial intelligence, sharing technology and so on, which have a tremendous impact on the form of human settlement, are rapidly maturing, which has accelerated our historical progress towards the next human settlement.

我们整理出了所有 1700 年以后对人居形态影响显著的技术发明，并观察了这三百年来的居形态的演变过程，得出了这样的结论：人类迄今经历了两种典型的人居形态，分别是农业人居（rural）和城市人居（urban），两种状态的典型区别是建造技术的成熟、混凝土的使用、电梯的出现、汽车的普及等使得路网、高度的建筑成为了主要城市骨架和城市元素。而我们能预见到无人驾驶、智能物流、VR、无人机、人工智能、共享技术等一系列对城市形态产生巨大影响的新技术正在迅速成熟起来，这加速了我们迈进下一个人居形态的历史进程。





# Technology MAP

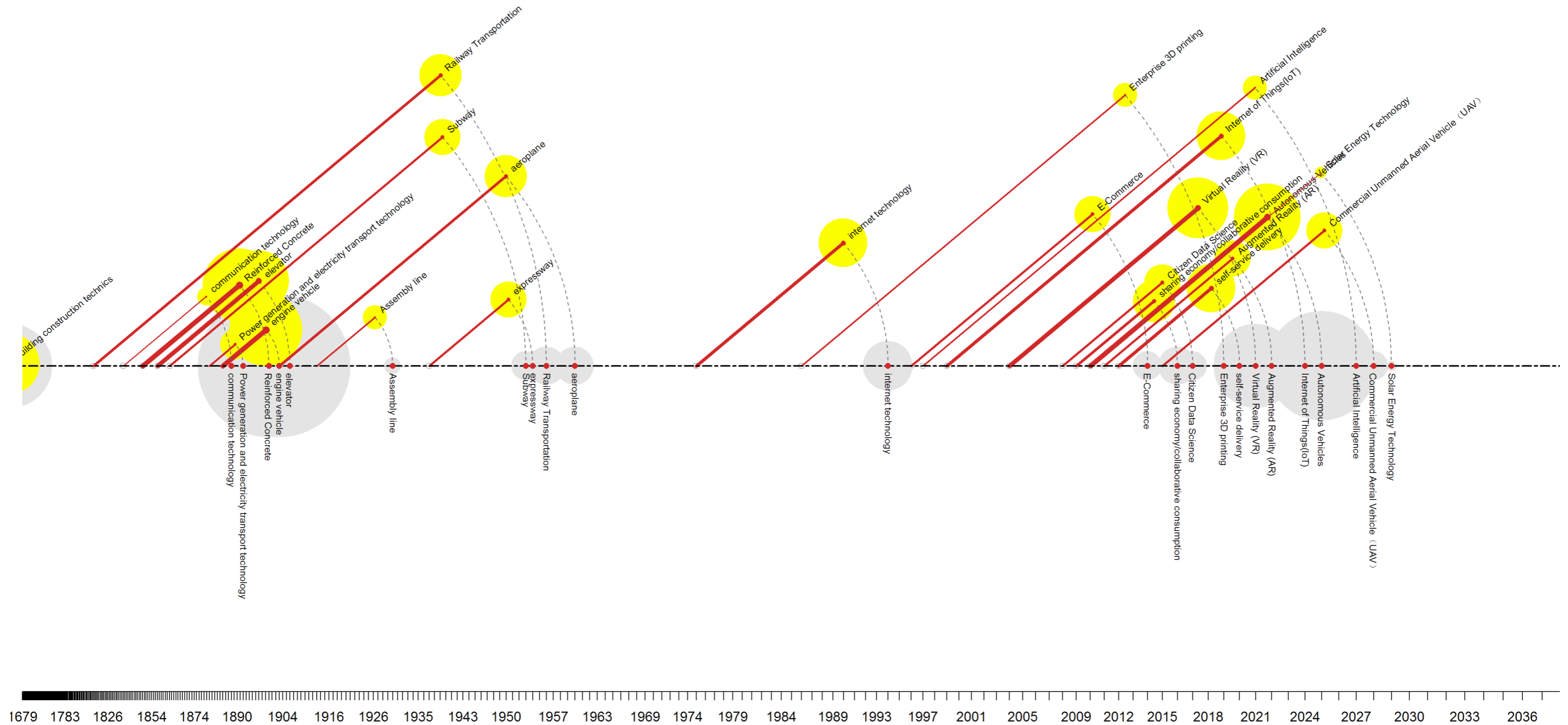
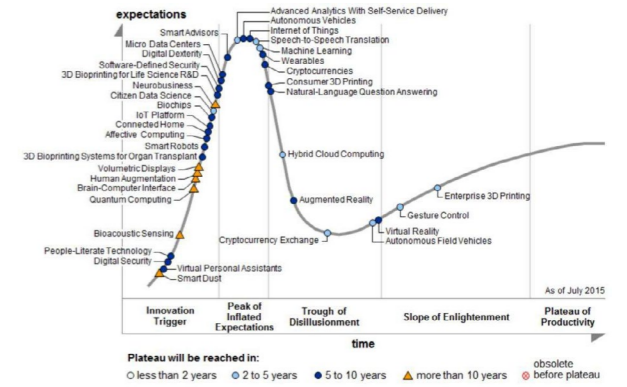
which influences form of human settlement

## Technical MAP affecting human settlement

According to the Gartner growth curve, technology will go through four stages, media exposure, citing bottleneck, popularization of technology. We have arranged the invention which deeply influence the morphology of the habitat for 300 years, and mark their invention time and mature period of popularization, making this piece of "living form the technology of map".

## 影响人居形态的技术地图

根据 Gartner 的技术生长曲线，技术会经历技术发明、媒体过分曝光、引用遇到瓶颈、技术成熟应用普及四个阶段。我们整理了三百年以来深刻影响人居形态的技术发明，并标记了他们的发明时间和成熟普及时间，制作成了这张“影响人居形态的技术地图”。

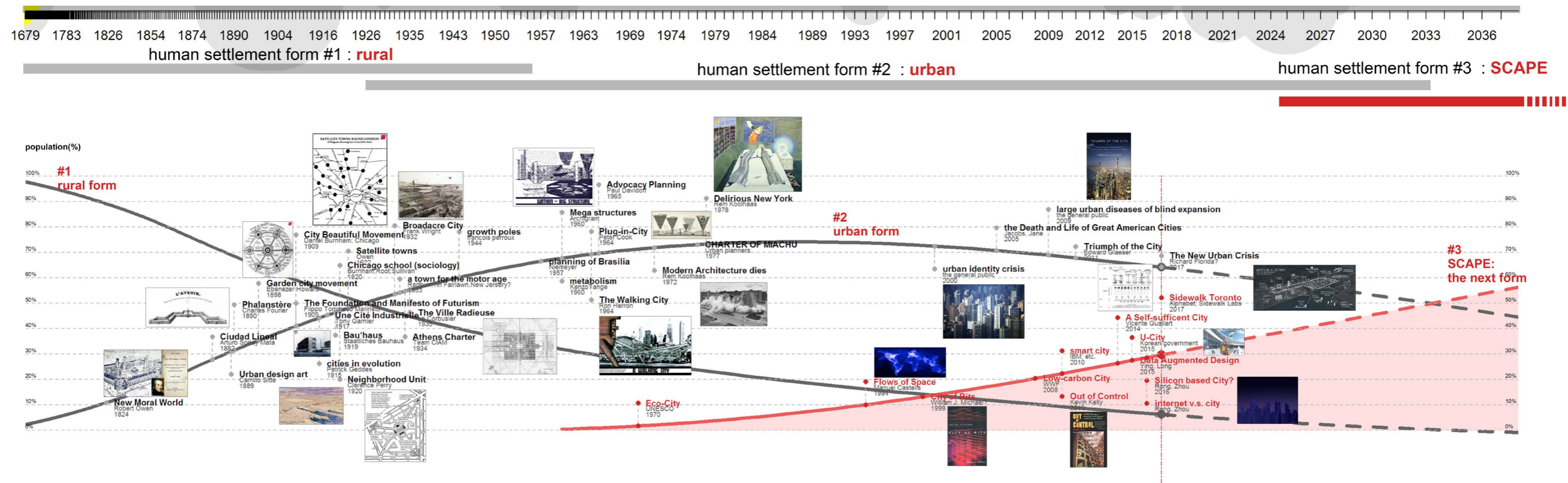


# Trend of thoughts

## along with different forms of human settlement

Trend of thoughts upon city has also been updated as the technology change. For example, in 1930 the city began to gather significant efficiency. In the mean time, people began to focus on the new human settlements rules (code) for the first time. Garden city, industrial city, linear city, broadacre City, gradient city are born in this era. After, in the 1950-1960s, as the basic form of human settlement is almost fixed, the trend of thoughts began to praise the victory of the city (city of victory, Edward), highly hailed skyscraper (delirious New York, Koolhaas). However, in the past few years (2010s), with the rise of the Internet revolution and the intellectual revolution, planners and citizens obviously feel that compared to the Internet, city lacks efficiency and adaptability. There began to occur negative space, retail withering, local culture civilization crisis in city. Many scholars began to focus on sustainable development, low carbon, the relationship between the city and the Internet, and even think about the future urban form--just as the theme of this competition. This somehow indicates that the urban form revolution is taking place, and the next human settlement is coming!

关于城市的思潮也一直随着技术的更新发生更替，例如在 1930 年城市的聚集开始表现出显著的效率，人们开始第一次关注城市这个新的人居形态的规则 (code) 应如何搭建，田园城市、工业城市、线性城市、广亩城市、光辉城市都是在这个时代孕育而生；在之后的 1950-1960 年代，城市形态基本固定，社会思潮开始出现诸如赞扬城市的胜利 (城市的胜利, Edward)、为摩天楼的高度欢呼 (疯狂的纽约, 库哈斯) 等思潮；然而到了近几年 (2010 年代)，随着互联网革命和智能革命的兴起，规划者和市民明显感受到城市相比互联网的低效和不适应性，开始出现城市的消极空间、零售业态的凋零、城市文明危机等，更多的学者开始关注可持续发展、低碳、城市和互联网的关系等，甚至像这个竞赛主题一样的对未来城市形态的思考。这预示着，城市的形态革命正在发生，下一个人居形态即将到来！







**NEXT FORM OF HUMAN SETTLEMENT**

**#2**

# **PROTOTYPE × 新规则**

If mountain and river is the core code of rural settlement, the road system and infrastructure system is the core code of urban settlement. The NEW CODE that the next form of human settlement will be intelligent and network. With the popularization and development of new technology, we have the following judgments on the future of human settlements:

# CODE

## new code of the next form of human settlement

If mountain and river is the core code of rural settlement, the road system and infrastructure system is the core code of urban settlement. The NEW CODE that the next form of human settlement will be intelligent and network. With the popularization and development of new technology, we have the following judgments on the future of human settlements:

### **Autonomous vehicles will evolve into the basic functional unit of future human settlements.**

At first, car driver was liberated under the technology of autonomous vehicles, then people will be in the automatic vehicle using the space as conference, film-watching, entertainment, catering and other functions. Finally, these autopilot "box" will be the functional flow into your house, and even be planted into homes.

### **People can do most of the life-living and working within the range of 20m.**

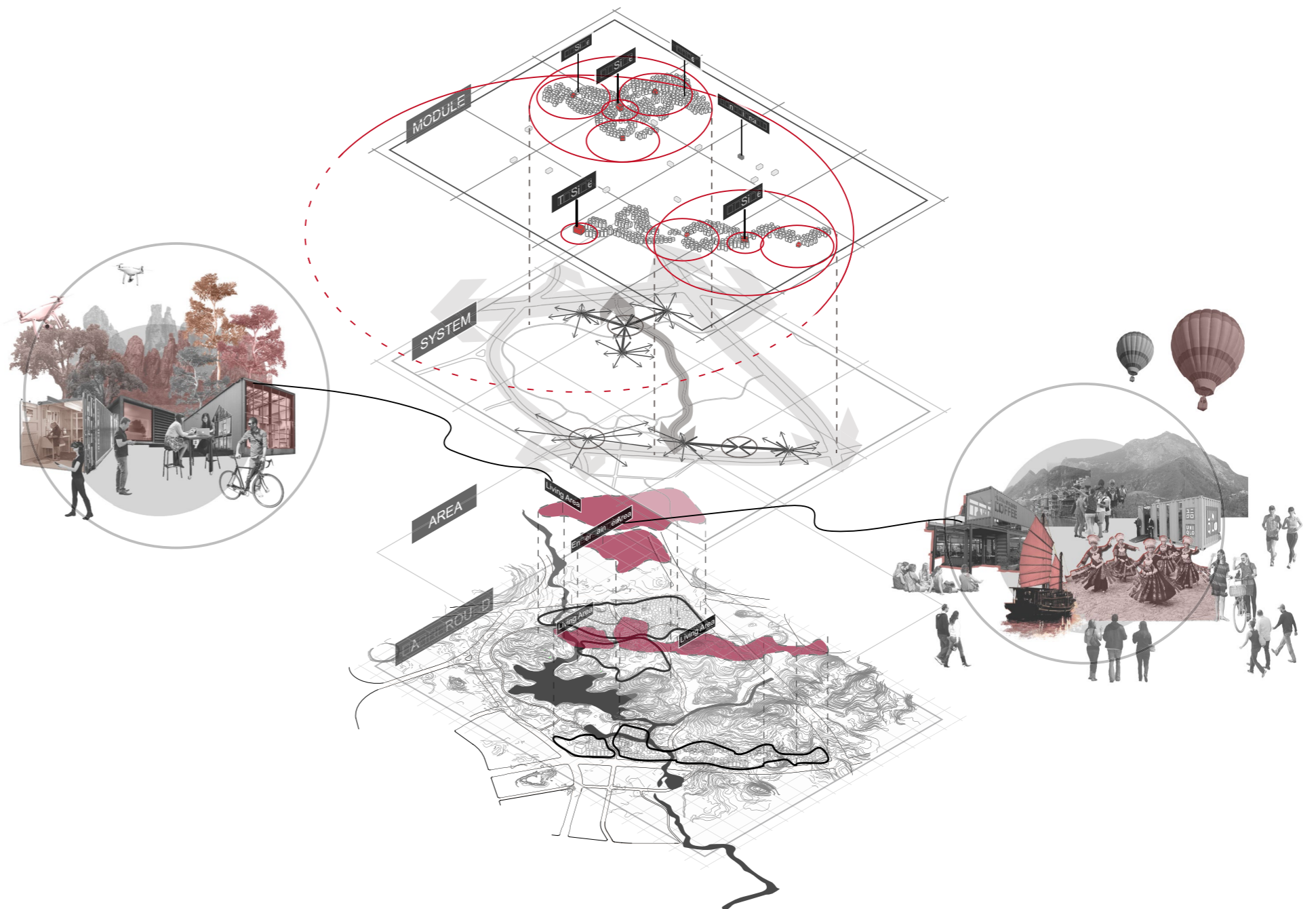
As autonomous vehicles turned into a functional stream, people can reserve functional stream (business, food, entertainment, clinics, education experts) come into their doors; plus, take into account the sophisticated logistics technology (takeaway, E-commerce express) and sophisticated VR technology Meeting, real-time interaction), most people can complete most of their living and working content in their home (that is, within 20m).

### **City will, as a whole, become the infrastructure.**

As residential units become the smallest unit of human existence, a large amount of space is released in the entire urban system. The entire urban system will become an infrastructure that serves human beings. UAV logistics systems, distributed warehousing systems, cloud control of autonomous driving functions, the urban digital infrastructure in the cloud, and the distributed energy supply system serving as a new infrastructure system for people.

### **People will realize that ecosystems will never be important, and ecological experiences will become an important way of life for human beings.**

People will be aware of the scarcity and importance of natural ecology. The ecosystem will infiltrate into the living space and become a new skeleton of the habitat. Fitness, bicycle, off-road, tea ceremony and outdoor festival experience will become important human leisure modes.







## NEXT FORM OF HUMAN SETTLEMENT

#3

# AGENDA × 议题

Through the reviewing of the technological invention history that affects the form of human settlement, we make insight into how the upcoming new technologies will dramatically affect the future human settlement form. Thus, as in the past, people from the rural areas to the urban habitat will enter a new form of living environment in the near future. In our scheme, this paper discusses the new form of living module, functional stream, life circle, new ideas, such as ecological human settlements to express a symbiotic relationship in the future city/Internet, and a new living environment under the new smart technology and infrastructure form.

# Background

along with different forms of human settlement

Based on the new city Code, we have retained more priority for the local ecological landscape, cultural landscape, historical features, to ensure that there is more space to conserve, preserve the unique style and temperament of the field.

基于新的城市 Code，我们保留了更多优先权给予当地的生态景观、人文景观、历史风貌，能有更多的空间来涵养、保存场域特有的风貌与气质



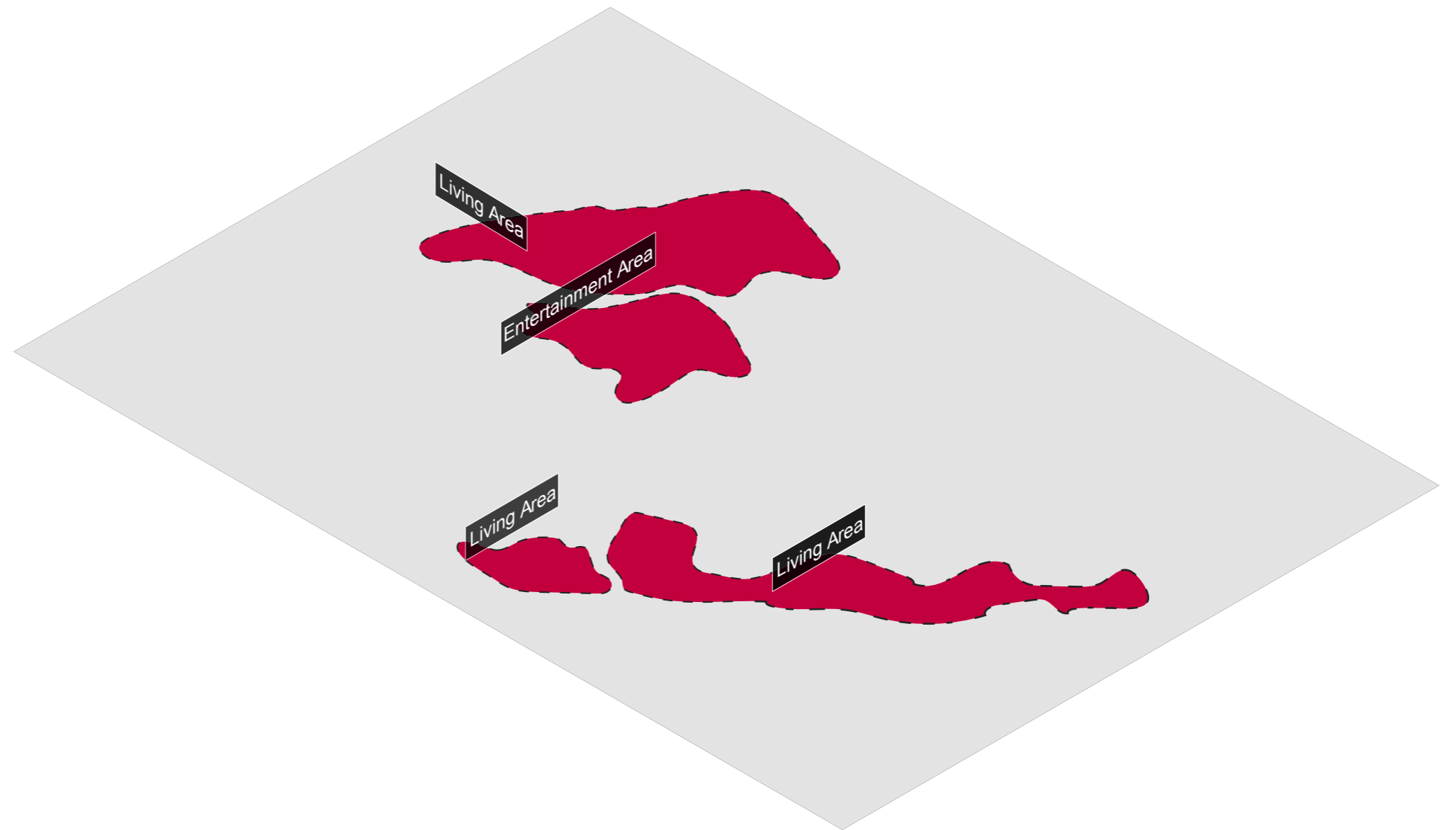


# Area

along with different forms of human settlement

Based on the Background of the field, we divide the area into different types according to their functions and characteristics, for instance, living area, entertainment area, natural area, etc., The main goals of the Area is to set the ratio of the Module in the form of living and the natural form, and way to arrange the Systems.

基于 Background，我们将地区依据其功能与特性划分为不同个性的 Area，例如居住区、娱乐区、生态区。再依据 Area 设定 Module 中居住形态与自然形态的比例，以及各项系统的边排。



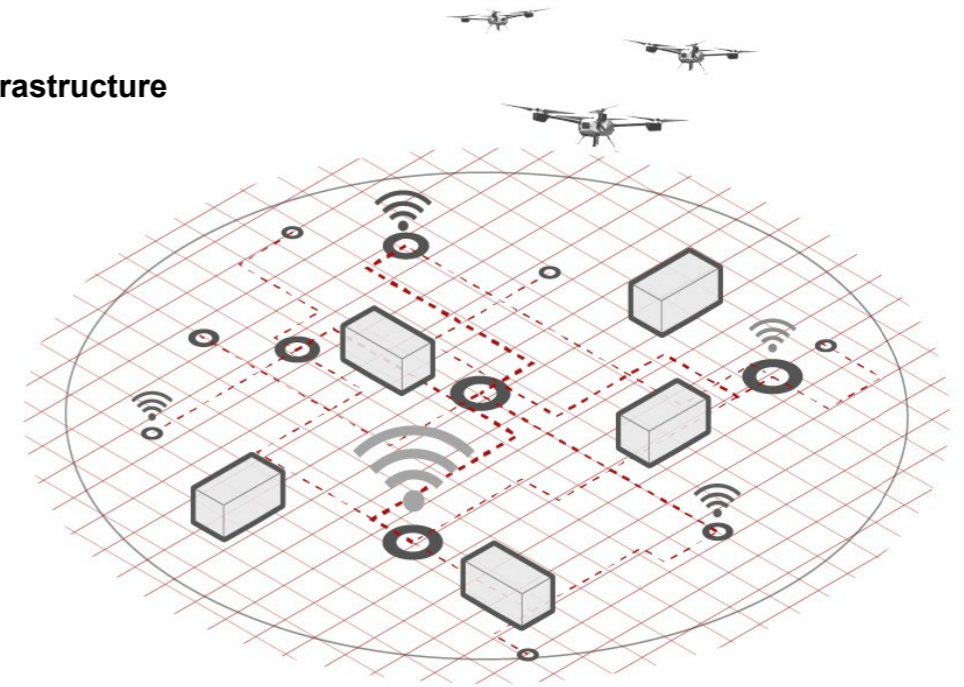
# System

along with different forms of human settlement

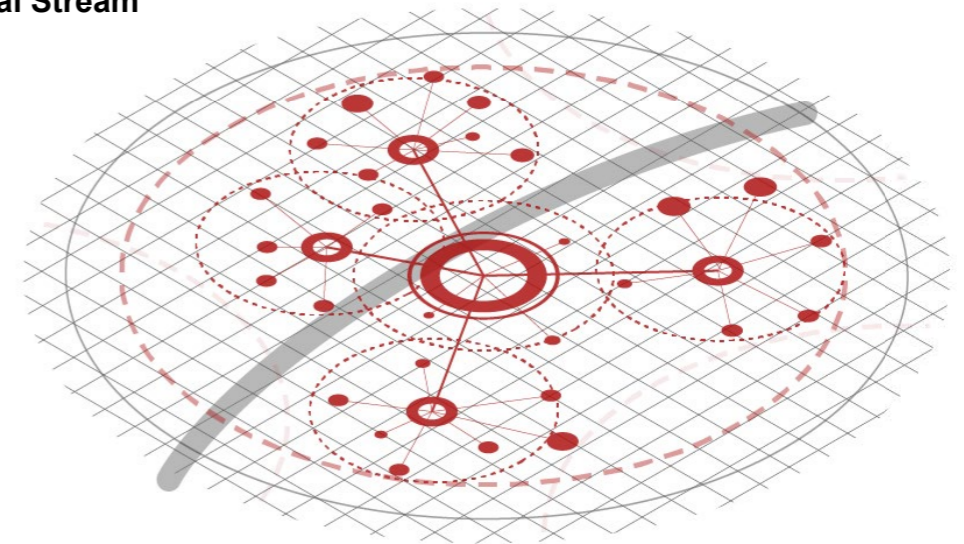
In the new city code, System is a formula for arranging Module, including cloud computing infrastructures, functional systems, and Settlement systems. Cloud computing system is New City Code's most basic support, he helped the living environment more efficient use of space to effectively reduce the size of the dwelling. The functional system is responsible for arranging and shipping all Functional Cubes. Settlement system is first to define and standardize the human habitat range, then classify them into different sizes according to their size, the order from small to large as follows: Neighbor, Community, Township, City, Metropolitan.

新的城市 Code 中，System 就是作为编排 Module 的公式，包括了云计算基础设施，功能流系统，以及人居系统。云计算系统是 New City Code 的最基础支撑，他帮助了人居环境空间更有效率的利用，以有效缩减人居范围。功能流系统则是负责安排、运送所有 Functional Cubes。人居系统则是首先定义了并规范了人居范围，再加以依照其范围大小分类别，其尺度由小到大依序为：Neighbor、Community、Township、City、Metropolitan。

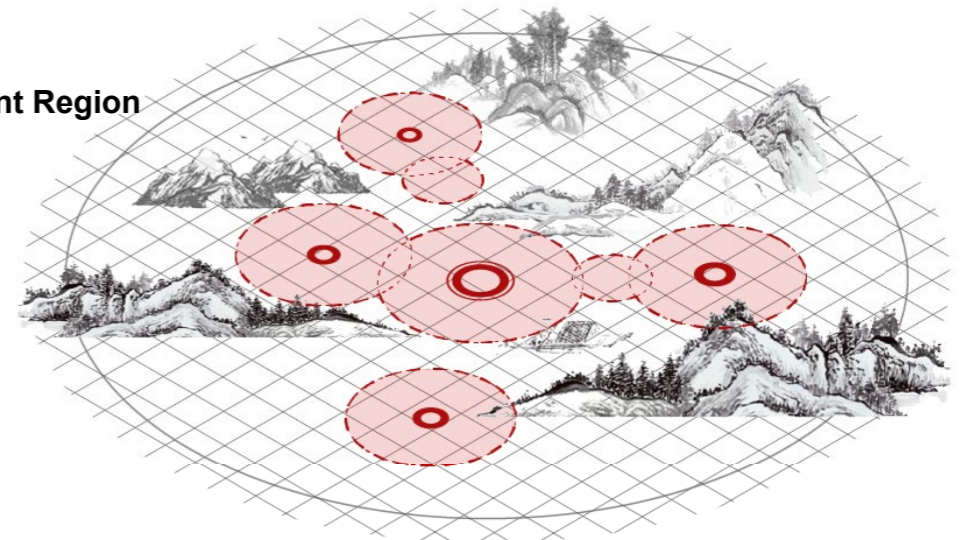
Cloud Infrastructure



Functional Stream



Settlement Region

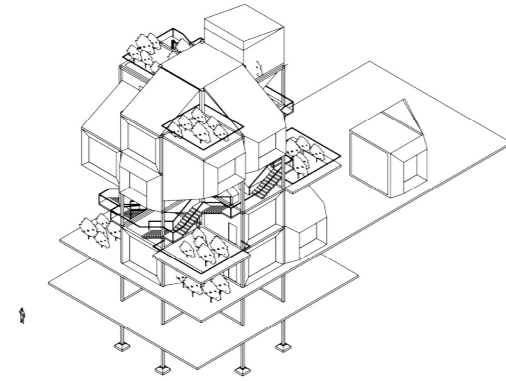




# Module

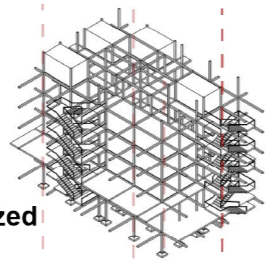
along with different forms of human settlement

## HOME

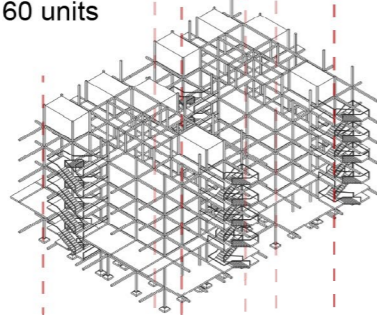


## HUB

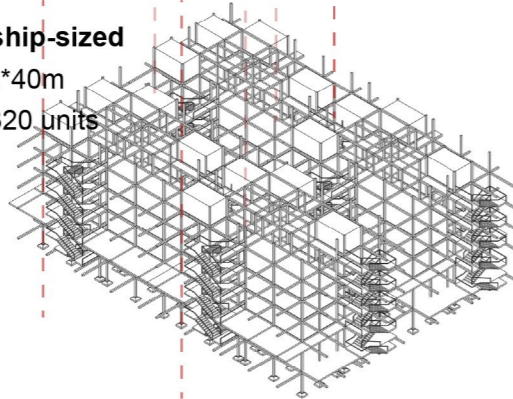
Neighbor-sized  
25m\*20m  
for 80 units



Community-sized  
25m\*40m  
for 160 units

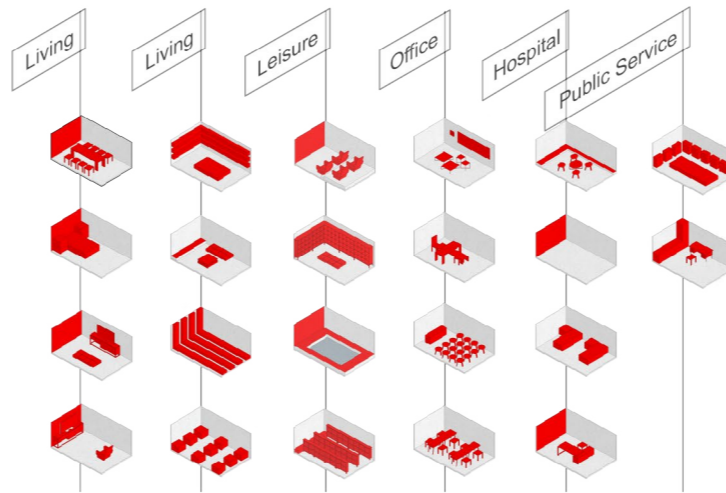
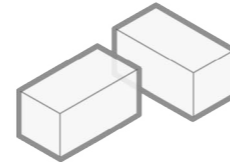


Township-sized  
50m\*40m  
for 320 units



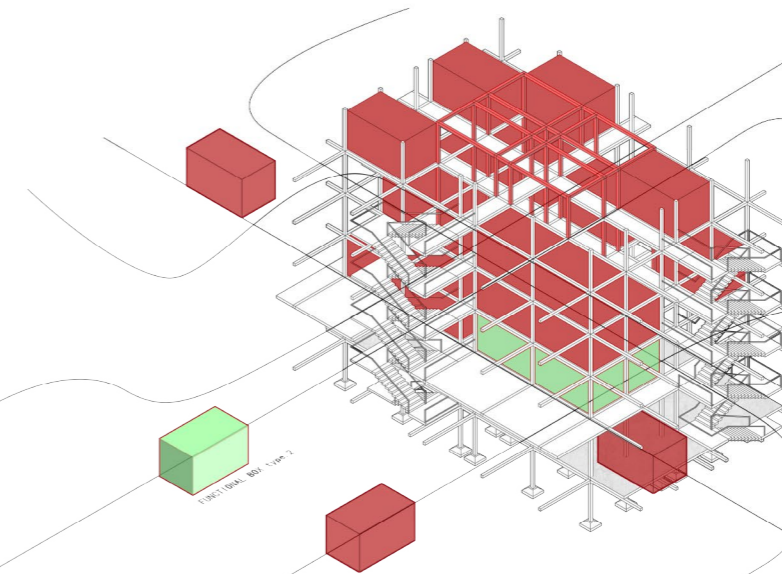
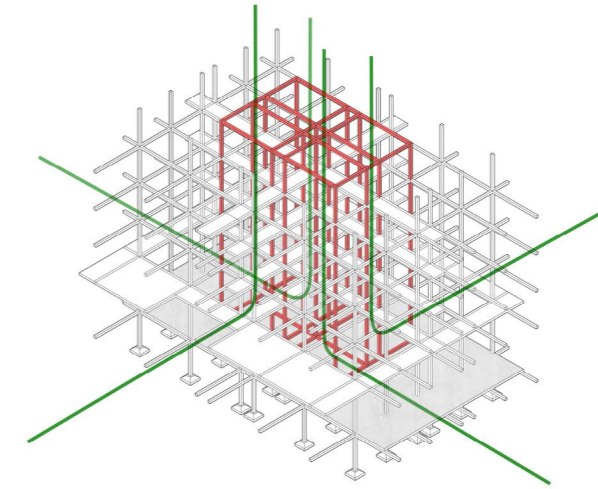
## FUNCTIONAL CUBE

A Cube = 3m\*5m\*3m



Living	Leisure	Office	Hospital
Bedroom	Movie	Personal	Nursing
Bathroom	Gym	Group	Medical Care
Working Room	Library	Ease Zone	Personal Clinic
Dining Room	Expo	Small Meeting	
Living Room	Dancing	Large Meeting	<b>Public Service</b>
Garden	Commercial	Forum Hall	Public Service

## THE STRUCTURE OF THE MODULE



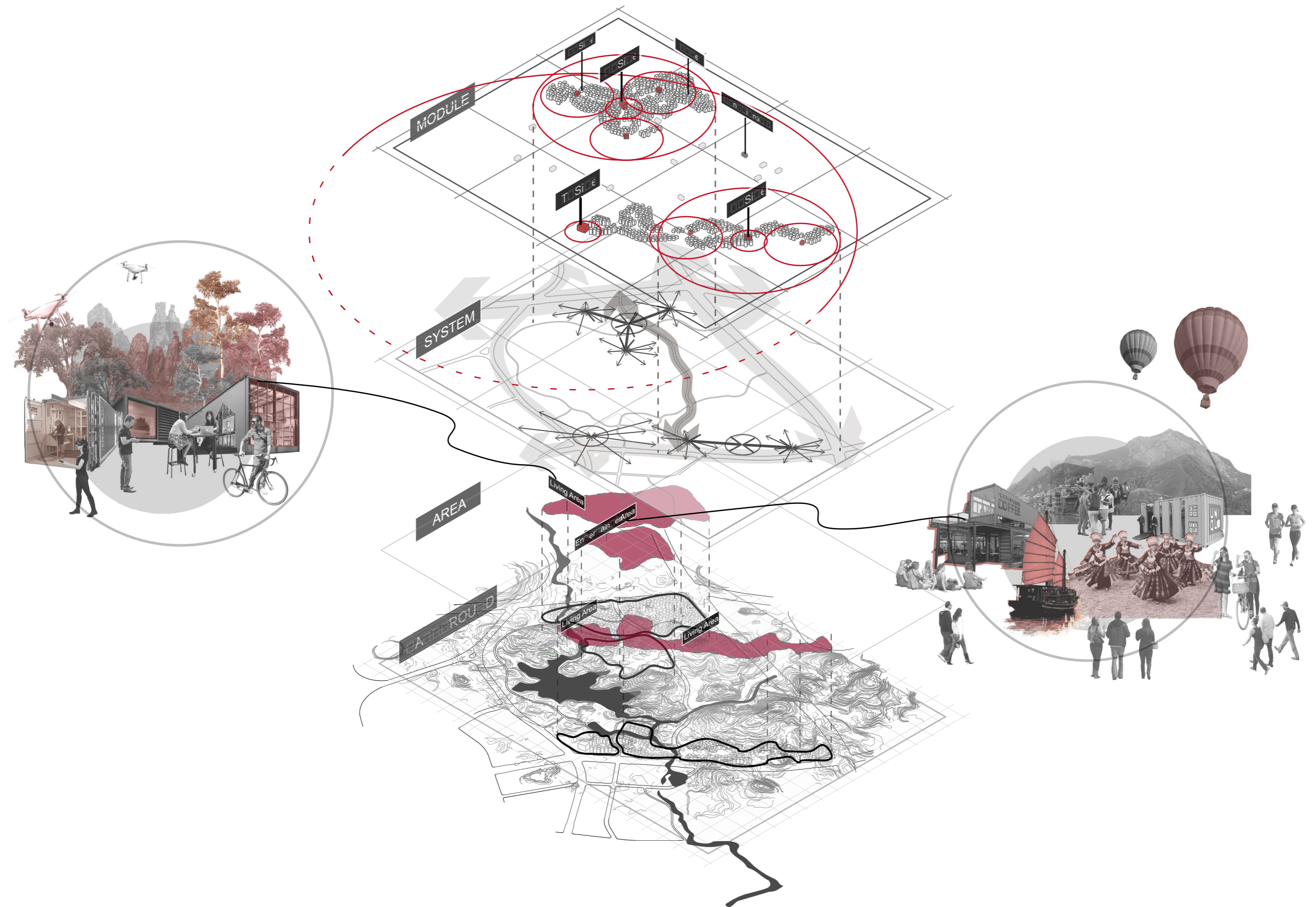
We assume that in the future, the living environment supporting by the new technology, for instance, UAV and self-driving cars, will be more flexible and humanity. People won't be able to tremendous travel or transport to the destinations anymore. Instead of using modules, most of the function would be directly transport to where people need. As a result, standardized and detachable Functional Cubes have been designed to carry various functions, while the fixed module, which is divided into two types. One is Hub which is designed to be a collection center. The other one is Home, the module where people lives in.

我们设想未来的人居环境因应技术，所有功能都可以借助无人机、无人驾驶而作流动，人不再需要大量长途跋涉或借助交通工具来移动至目的地，而是藉由模块将功能，直接传达至人的居住地。因此设计了标准化、模块化的 Functional Cubes，以承载各种功能，以及固定的模块，其中又分以作为移动模块集合中心的 Hub，和人类的居住单元 Home。



# Layout

along with different forms of human settlement





An aerial, grayscale photograph of a landscape. In the foreground, there is a dense forest of trees. A river or stream flows through the middle ground, curving from the left towards the center. In the background, there are several large, modern buildings, possibly a university or government complex, situated on a hillside. The overall scene is a mix of natural and built environments.

**NEXT FORM OF HUMAN SETTLEMENT**

**#4**

# **ENGAGEMENT × 介入义龙**

Mountains and mountains is a major feature of Guizhou region, the traditional local architecture will be based on different geographical and hydrological reasonable "growth" to form a unique geographical and cultural landscape.  
In this architectural design, we use the "traditional" architectural language of "sloping roof" in combination with the concept of "modularity" to freely combine the spaces and deepen the design to form the unique "Karma Stewart" image.

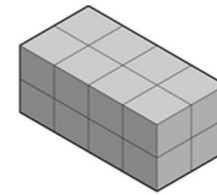
# Architecture Concept

Mountains and mountains is a major feature of Guizhou region, the traditional local architecture will be based on different geographical and hydrological reasonable "growth" to form a unique geographical and cultural landscape.

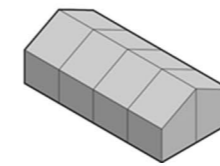
In this architectural design, we use the "traditional" architectural language of "sloping roof" in combination with the concept of "modularity" to freely combine the spaces and deepen the design to form the unique "Karma Stewart" image.

The building itself will also be reasonably "metabolized" according to the different needs of different periods to maintain the status quo and meet the needs of the times while promoting the national culture.in city. Many scholars began to focus on sustainable development, low carbon, the relationship between the city and the

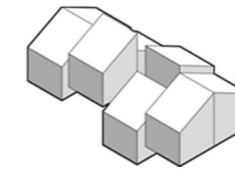
奇山峻岭是贵州地区的一大特色，传统的当地建筑会根据地理和水文的不同合理的进行“生长”，形成独一无二的地域人文风貌。在本次建筑设计中，我们运用“坡屋顶”这一“传统”的建筑语言，与“模块化”的概念相结合，将空间自由组合，并深化设计，形成贵州当地别具特色的“喀斯特”形象。建筑本身亦会根据不同时期的不同需求进行合理的“代谢”，以不变应万变，在满足时代需求的同时，弘扬民族文化。



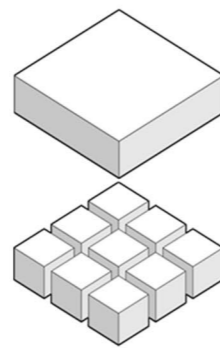
CUBE



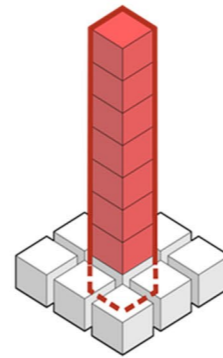
TRANSFOR 1



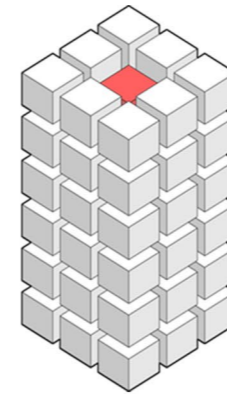
TRANSFOR 2



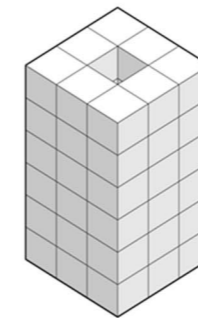
SPLITE



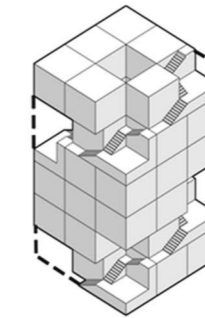
UP



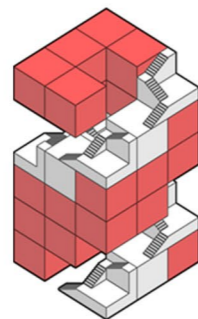
ARRAY



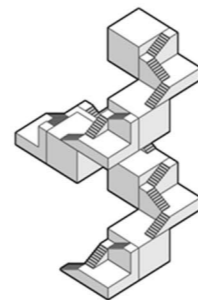
COMBARE



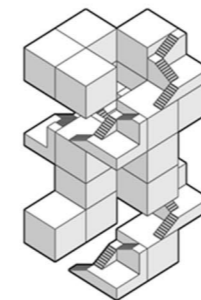
SUBTRACT



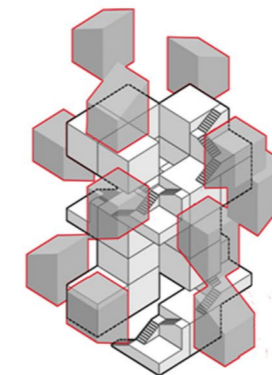
SUBTRACUT



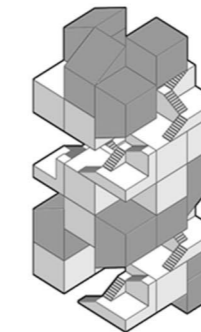
STAIR



ADD SPACE



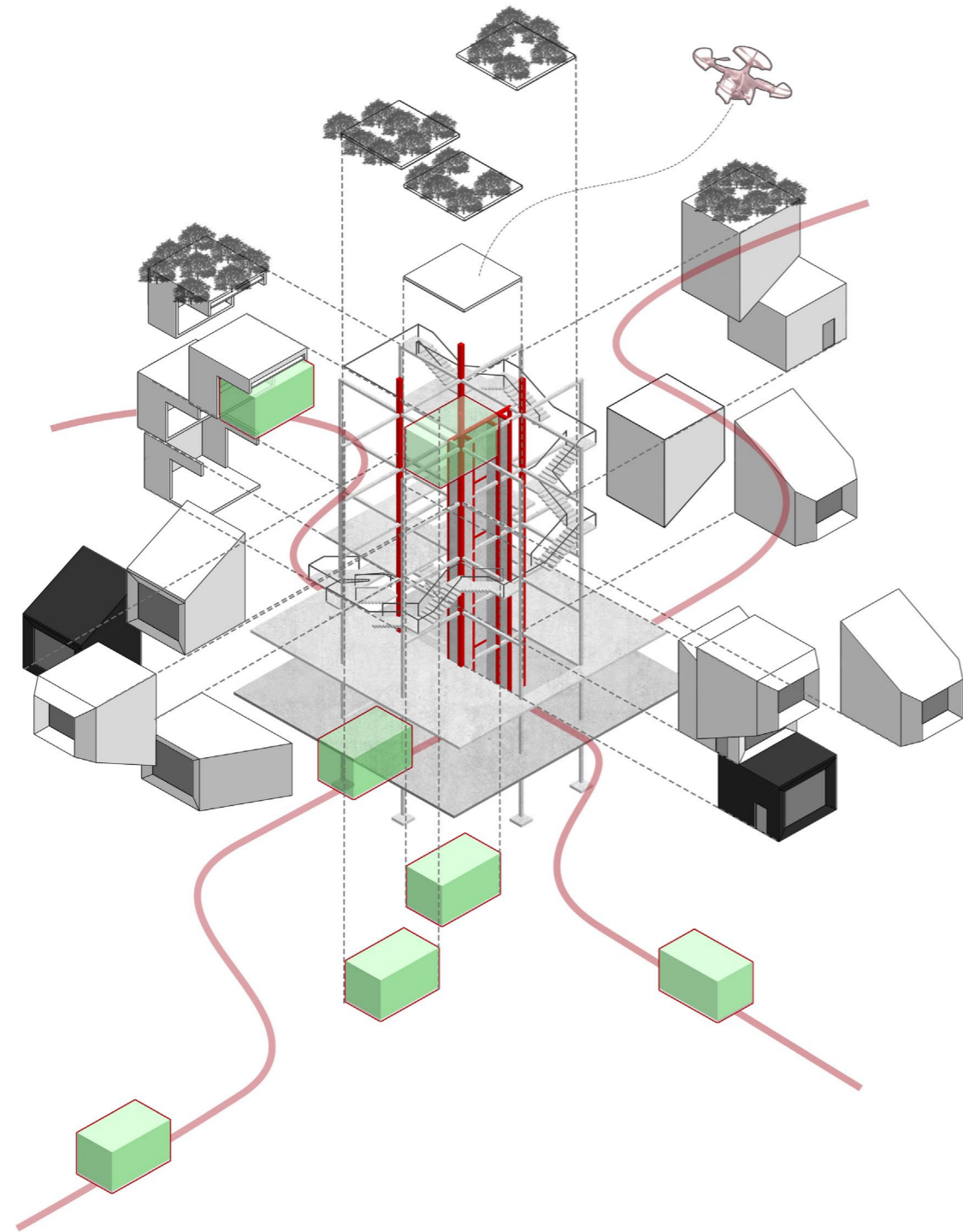
ADD MODULE



COMBARE

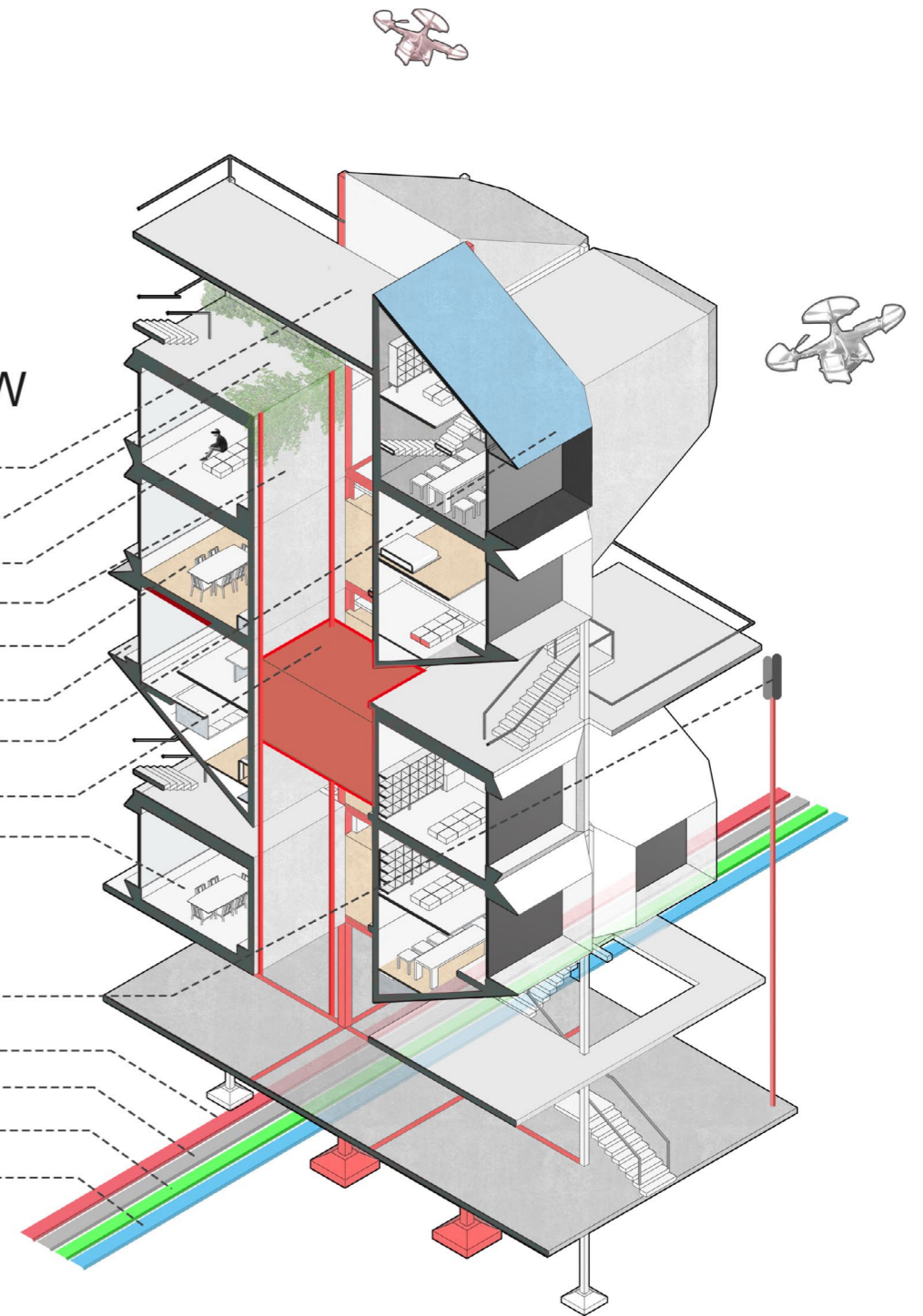


# Architecture



## SECTIONAL VIEW

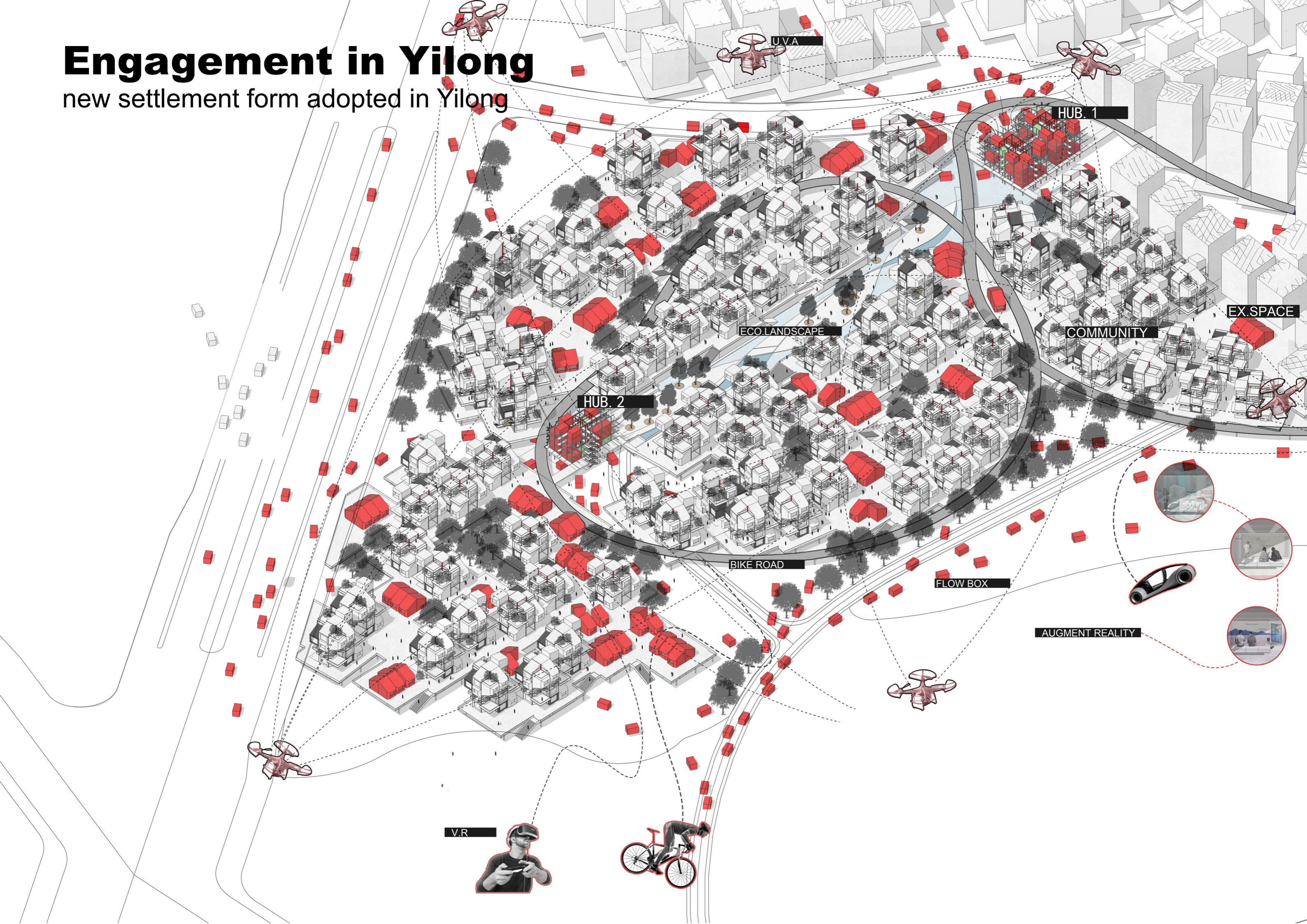
- UAV receiving station
- Green balcony
- AR experience room
- Function flow shaft
- Restaurant kitchen
- Leisure Balcony
- Solar panels
- Functional Box
- SOHO
- Internet of Things sensor
- Information Flow
- Drain
- Strong electricity
- Heating





# Engagement in Yilong

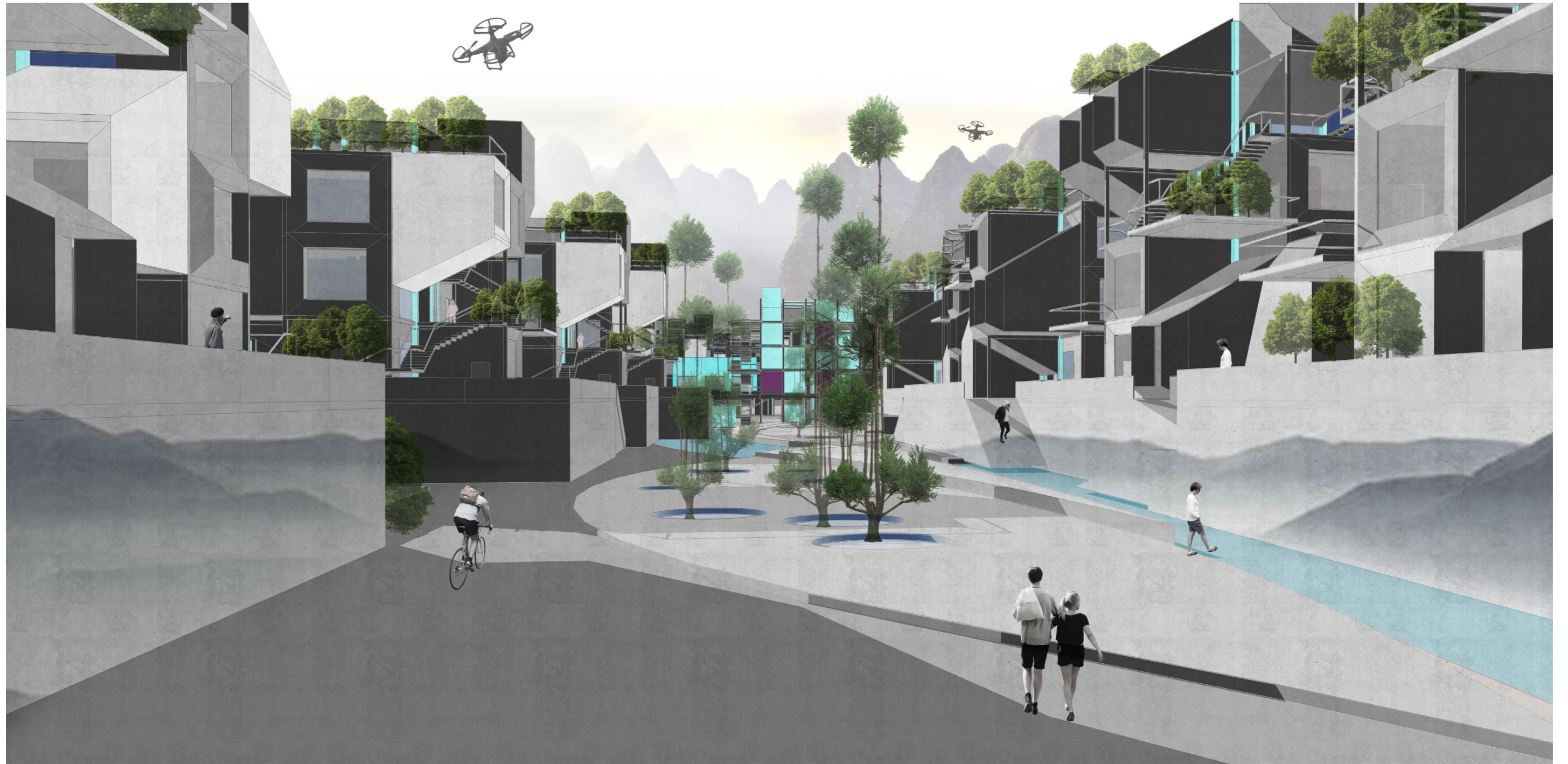
new settlement form adopted in Yilong





# Design Sketch

a daily perspective in future Yilong







**NEXT FORM OF HUMAN SETTLEMENT  
#END**

# **THE NEXT FORM OF HUMAN SETTLEMENT**