

# 2020 Sharing Cities Studio Guomao

Class 2 - 2020/02/21

General Notes:

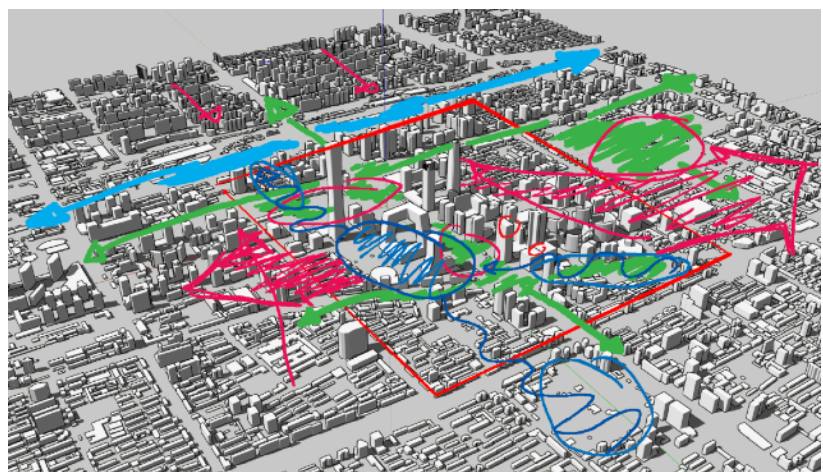
## 1 STUDIO REMARKS

1. Don't be bound by perceived limitations in concept or site boundary when starting your studio group analysis work; this includes the definition of 'sharing'; our 2020 studio could focus more on the future city, a smart city, etc.
2. Take a stance to consider whether sharing something is good to citizens, business and governments, and/or what this should mean to the future city.
3. Technologies have significantly shaped the nature of work, transport and leisure things, and please keep in mind what architects can do in the era
4. How to verse techs in design is not easy and can gain some knowledge from the list of smart city projects in the second list for homework
5. Combining cutting-edge technologies and space design is worthwhile to investigate as revealed by our review for the current practice of the top 100 architect companies in the world

## 2 Urban Design Analysis

Start with a larger scale urban analysis, based upon the focus points from your presentation, in different steps and layers that can then overlap to form a spatial strategy.

Try to map the existing spatial urban conditions from the starting point of your concept.



## **Design of Cities by Bacon**

<https://cloud.tsinghua.edu.cn/d/154be6d9699749ef8db5/>

### **1. Smarter London Together**

<https://www.london.gov.uk/what-we-do/business-and-economy/supporting-londons-sectors/smart-london/smarter-london-together>

### **2. Sidewalk Toronto**

<https://www.sidewalktoronto.ca>

### **3. Smart Seoul**

<http://digital.seoul.go.kr/eng/smart-seoul/strategy>

### **4. Kashiwa-no-ha Smart City**

<https://kashiwanoha-smartcity.com/en/>

### **5. Amsterdam Smart City**

<https://amsterdamsmartcity.com>

### **6. Smart Nation Singapore**

<https://www.smartnation.sg>

### **7. Smart City Wien**

<https://smartcity.wien.gv.at/site/en/smart-traffic-lights/>

### **8. Smart Cities New York**

<https://smartcitiesny.com>

### **9. SmartPORT “DIGITAL” : Port of Hamburg**

<https://www.hafen-hamburg.de/de/presse/media/video/smartport-digital---37960>

### **10. Xiong'an New Area**

<http://english.xiongan.gov.cn>

### **11. Woven City**

<https://baijiahao.baidu.com/s?id=1657706815557065527&wfr=spider&for=pc>

in order of presenting

**Group 4 + 5 Green Infrastructure / Public Facilities**

- Green Infrastructure: focus on stormwater and its dirty run-off in urban areas
- implementation of New/ Renewable Energy methods
- improving existing bike infrastructure
- reference: Seoulo + case study of American government: Greener Cities/ Cooler Cities
- 'Rain Garden' Catch it if you can + Re-designing Cities to Function like Forests

Presenter: 1 Gabriel 2 **Manuel**

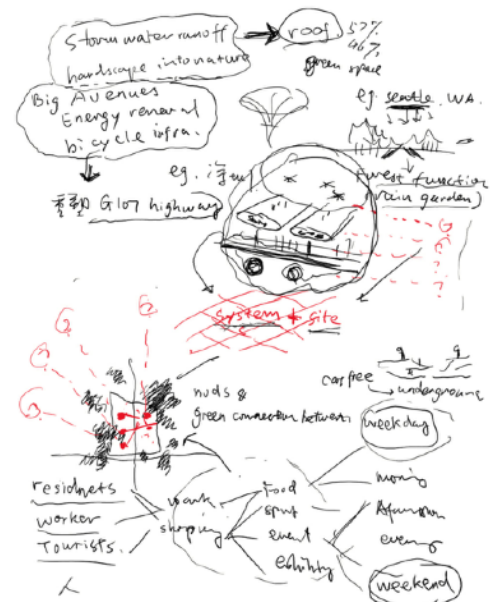
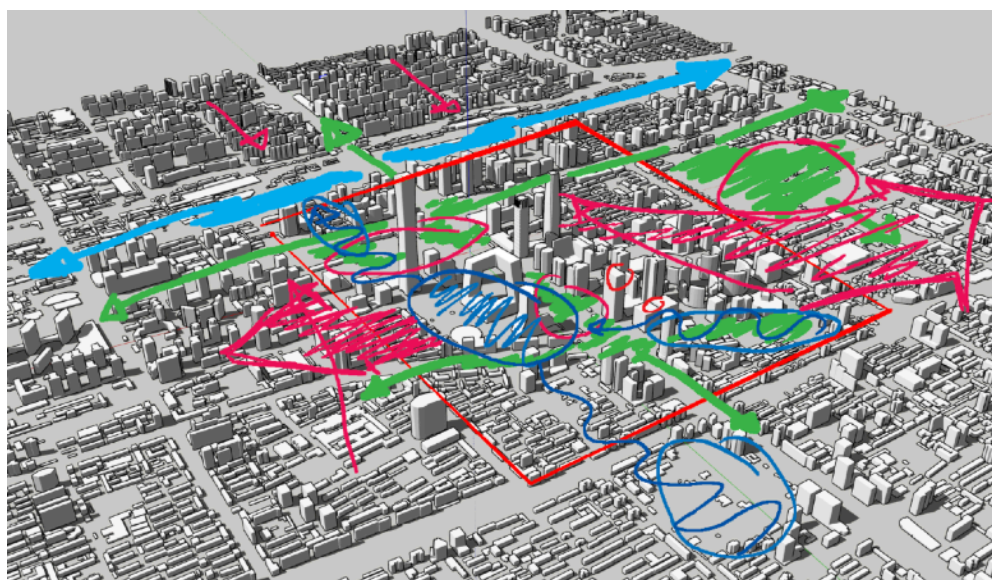
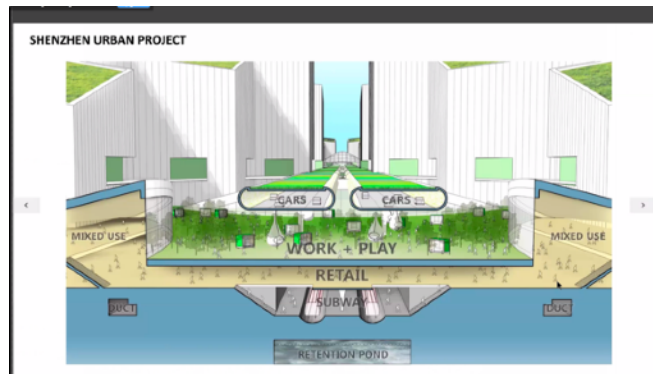
What is the future of shared green public service?

- public service node, with a mixed place for a variety of activities (indoors)
- this also continues to the outdoor areas

Presenter: 3 Stella 4 Thomas 5 **Russel**

Remarks:

good case studies and concept, now start with a larger scale urban analysis, based upon the focus points from your presentation. Try to map the existing spatial urban conditions from the starting point of your concept. (e.g. water system, existing topography, green backbone)



## Group 1 - Work

Working as a lifestyle?

6 Minhui: 7 Prera: 8 Benny: 9 Huiying:

Remarks:

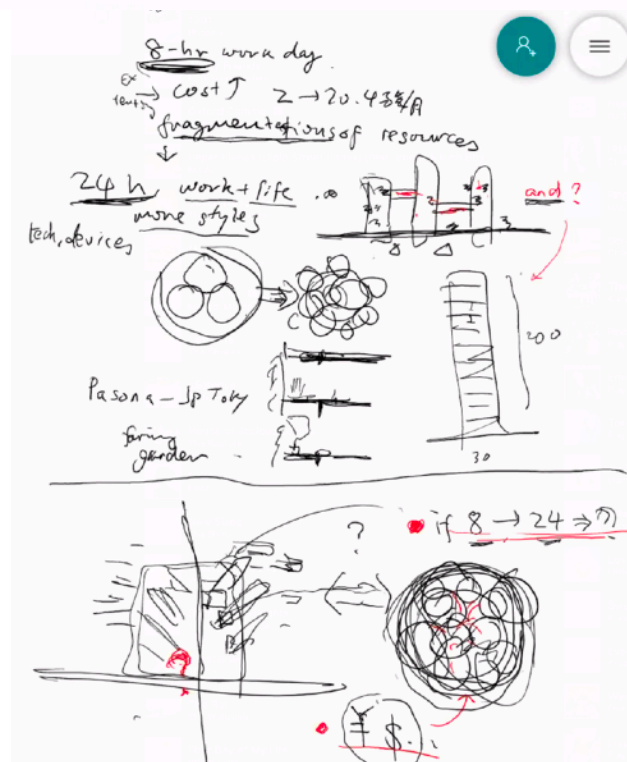
- Too directly into going into the 'objects', but first we need to set the framework, spatial boundary and strategy. Concept direction as shown in the diagram below could be a good starting point. Start with the '?' areas: what could that be?
- 8 to 24h?
- what is the effect of the change in work culture on the large companies in this area?
- Look into the change in the work environment, think about the future life(style), a day in the future CBD, and base your concept of work on this.
- case study of a HQ office working environmental change in Beijing's silicon valley: <http://maisonh.nl/project/happy-elements-hq/>
- case study UN Studio mapping of manhattan: <https://www.unstudio.com/en/page/12062/ifcca>

## Concept



**Boundaries between functions, individual society, city and workspace will become more blurred.**

Disappearing of Boundaries: From office space in the city to the city as an office platform, from the traditional clear space partition, to the working space that has gradually melted in every corner of the city



## Group 2 - Living

Modular, super structure superimposed over the CBD grid, based on Friedman/ T?F, for the displaced community.

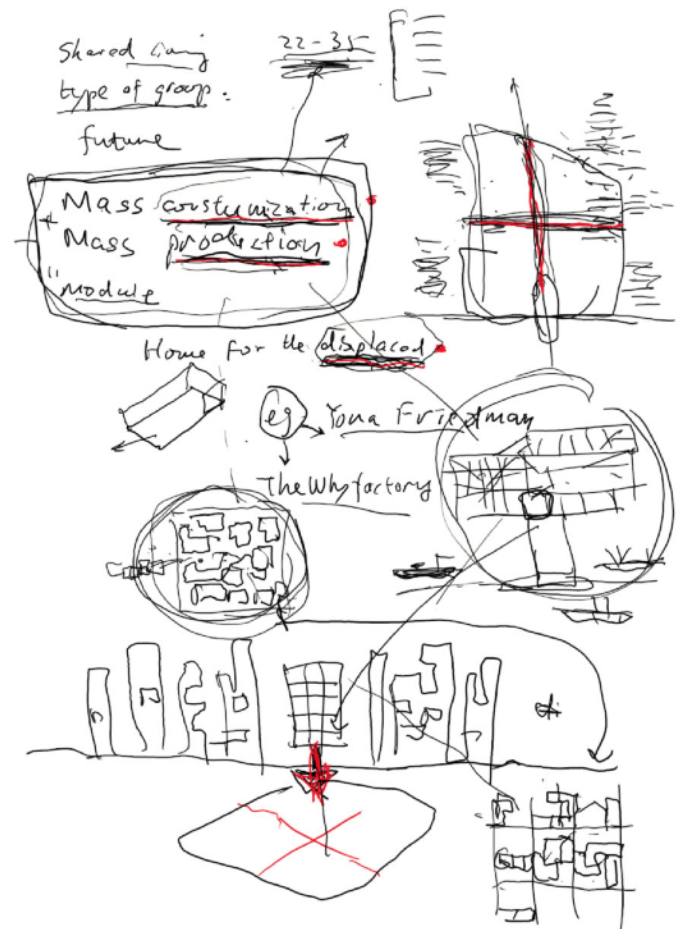
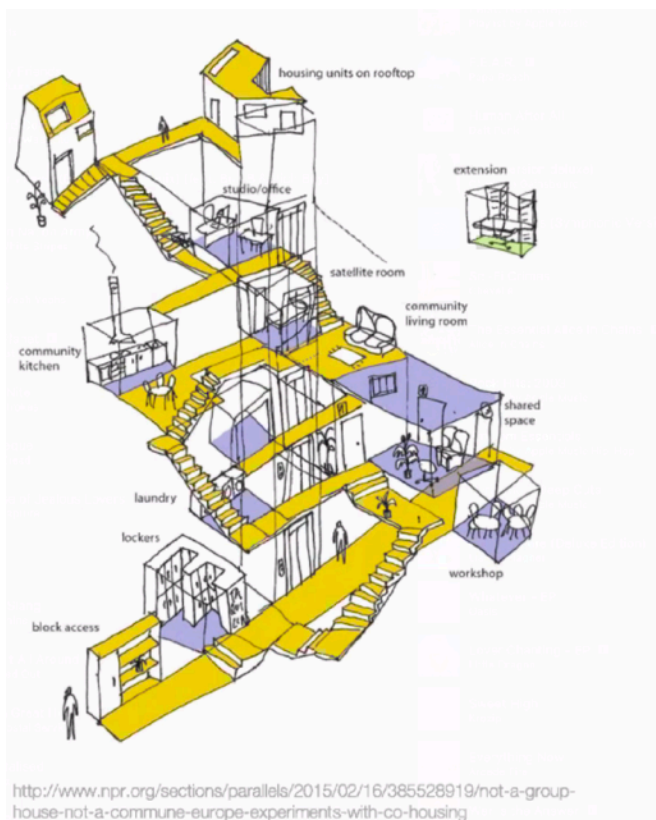
Presenter **Natalia** Paul Mattia Rita

### Remarks:

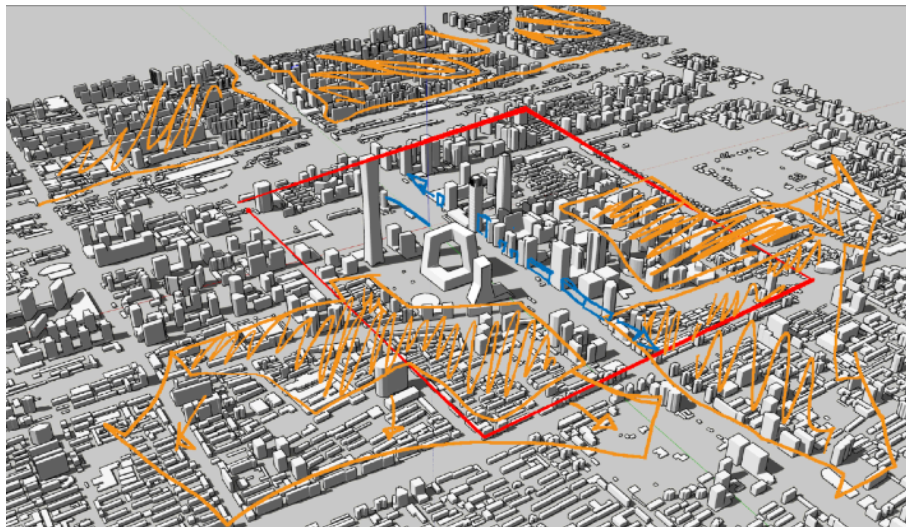
Concept is clear. However, in general: try a more bottom-up approach. Meaning: coming from the analysis of (spatial/ urban) conditions in your site, rather than imposing some external structure. Also, how about the public space on your modular structure? Perhaps something more like the first image on your slide, see below. That could be a starting point for your urban strategy, see next page.

### From last time:

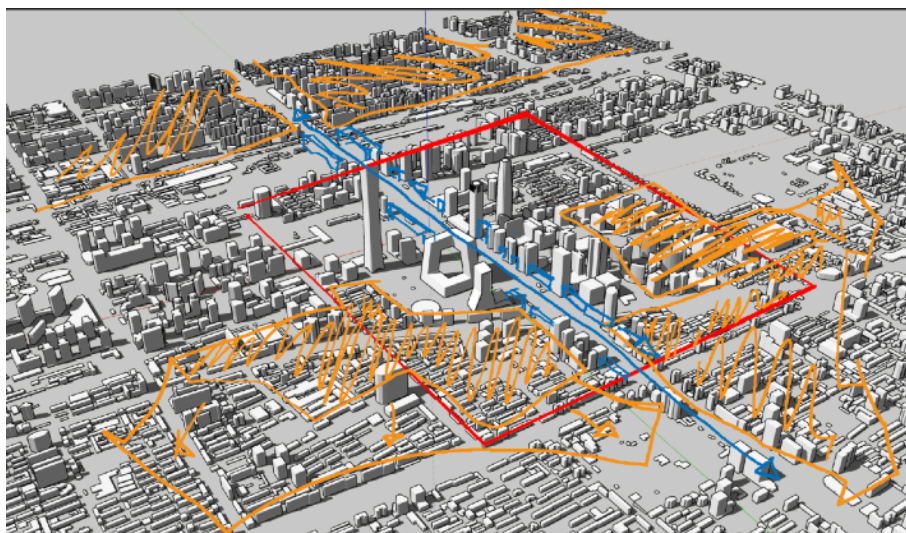
- Recommend to look into new types of housing development typologies, creating shared communities: Open Building, initiated by MKA Architects the Netherlands <https://www.openbuilding.co/> // Nightingale Housing development in Melbourne, Australia by Breathe Architecture. Also, consider the target group; who will live here? What type of community should we create? Are we talking about Shared Living, or Group Living? What is the difference?
- Take a stance to consider whether sharing something is good to citizens, business and governments, and/or what this should mean to the future city.



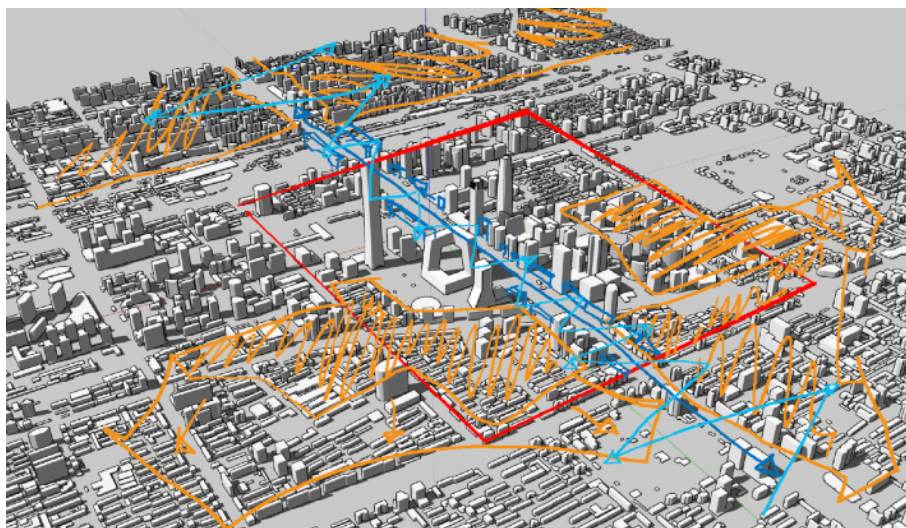
**step 1, blocks of residential**



**step 2: N/S linear infill connector**



**step 3: cross connecting public space that integrates residential life in CBD framework**



### Group 3 - Mobility

topic: case studies Philadelphia, Google Sidewalks, Woven City  
problem of singular planar typology

presenter Katherine Nathan Lala **Tsunxian**

Remarks:

- Rather than just the system, it's about the joints/ hubs, a change of mobility.
- We need to consider the scale. and the technologies.
- <https://yixi.tv/speech/728>, Jacob Walker's public talk is available here
- case study:

Woven City by BIG+Toyota <https://www.archdaily.com/931468/big-designs-toyota-woven-city-the-worlds-first-urban-incubator>

Sidewalk Labs by Google in Toronto; <https://www.ft.com/content/9fbd70da-05a7-11ea-9afa-d9e2401fa7ca> <https://www.sidewalklabs.com/>

