

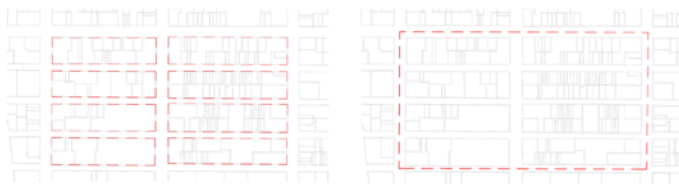
GUOMAO - Shared Future City - class 9

Avoid the ‘futuristic thinking’, rather try to look from the future to the current situation -> reflexive. Encourage Cross-thinking. We need to integrate the various layers. How can the 3rd ecology be a complete and holistic system?

keep continue to integrate your various analysis layers into a comprehensive master plan drawing. (figure ground plan/ top view site plan/ zoning plan)

For everyone, important information about FAR/ Density in urban areas, via [KPF website](#):
The images on the right are typical examples of urban design components: masterplan and zoning plan.

Floor Area Ratio, the ratio of the total building floor area to the lot area, is a common measurement system used to regulated the density of buildings. Most cities use floor area ratio (FAR) as part of their zoning regulations. Both New York City and London use FAR, but they measure it in different ways, resulting in different representations in density.



NYC: FAR = Gross Floor Area / Lot Area

LD: FAR = Gross Floor Area / Street Center Line Area

In New York City, FAR is calculated relative to the lot area, were as in London FAR is calculated relative to the center line of the streets bounding the lot. The London method gives a better representation of the built density of a neighborhood as it takes into accounts streets and public spaces, but is difficult to use as regulatory mechanism. Below are several New York City neighborhoods measured using both FAR methodologies to illustrate the different representations of density.



Flatiron District

LD FAR: 5.3

NYC FAR: 8.0



Financial District

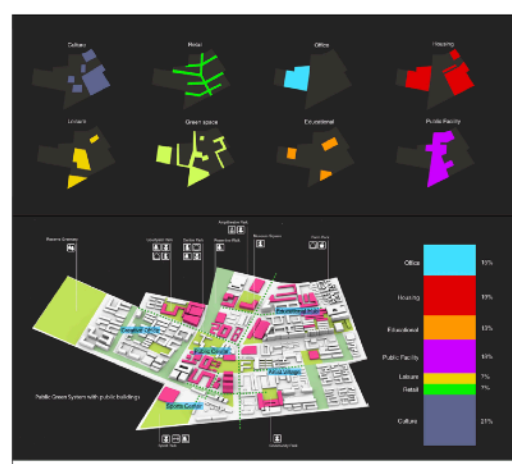
LD FAR: 11.3

NYC FAR: 18.0



Songshuangartillage

Masterplan



Songshuangartillage

Prepared zoning

Group 2 - Living / Residential

Mattia Natalia Paul Rita

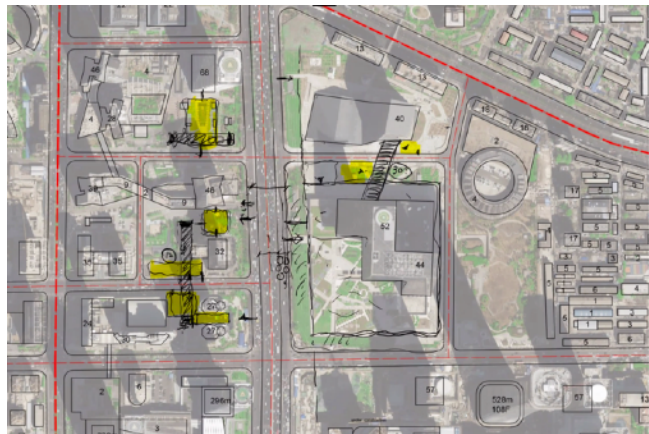
Remarks: Is development or progress or increasing what we need for the future? Do we need to do more always? Do we need to add more buildings, more density? Should be about a future **lifestyle**.

Currently, Too abstract, too formalistic. Consider what a future lifestyle would be, not just in its spatial form, but what kind of life will people have? How does this lifestyle relate to other aspects of a future city? what about the effect on the whole site? -> Cloud Living is a good concept start

Future Lifestyle: Cloud Living, you don't own anything but you can access everything

M: Maybe an option to add another dimension to the urban fabric.

Quite strong in architectural concept; but not so strong in urban fabric design.

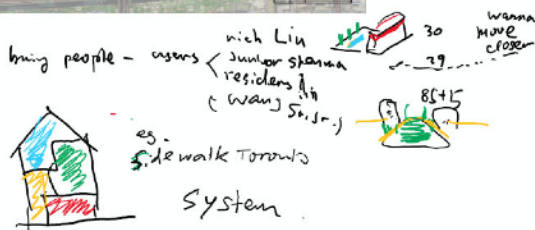


Scale of building?
&
density of site

Considering the
whole site

still suggest
the existing tower

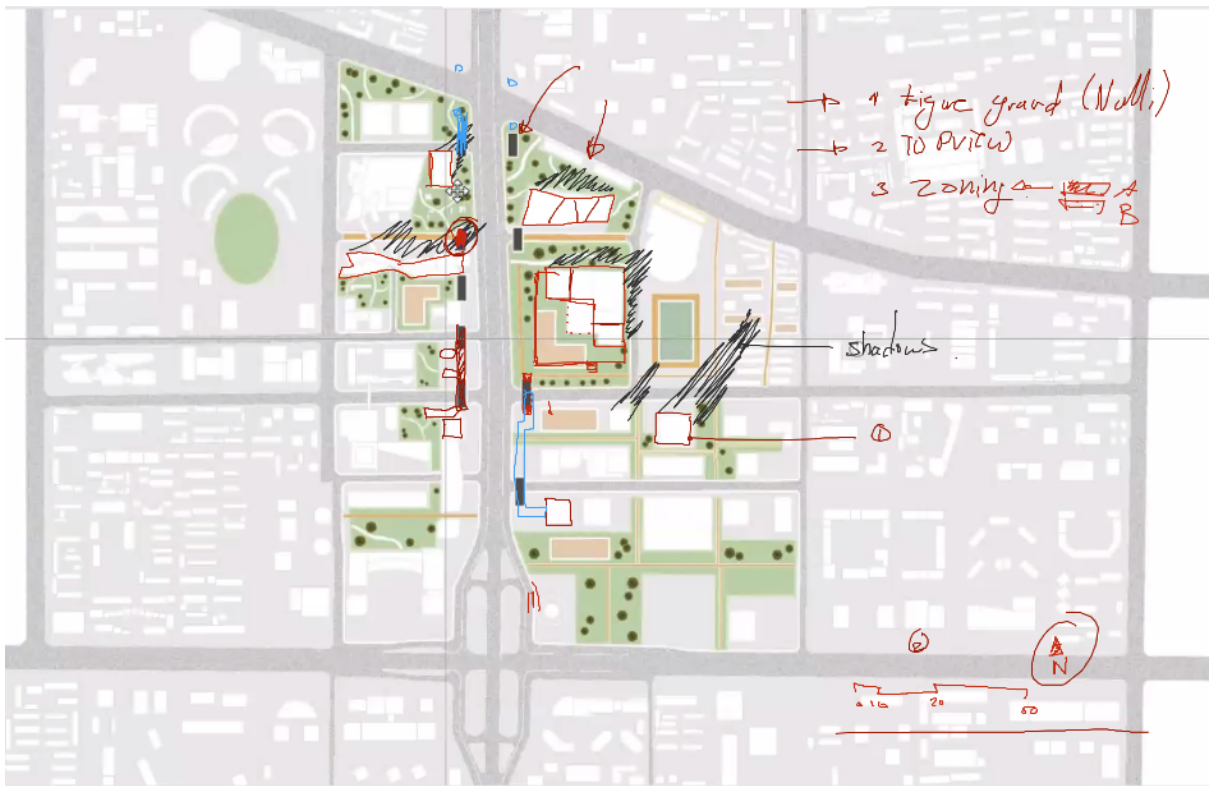
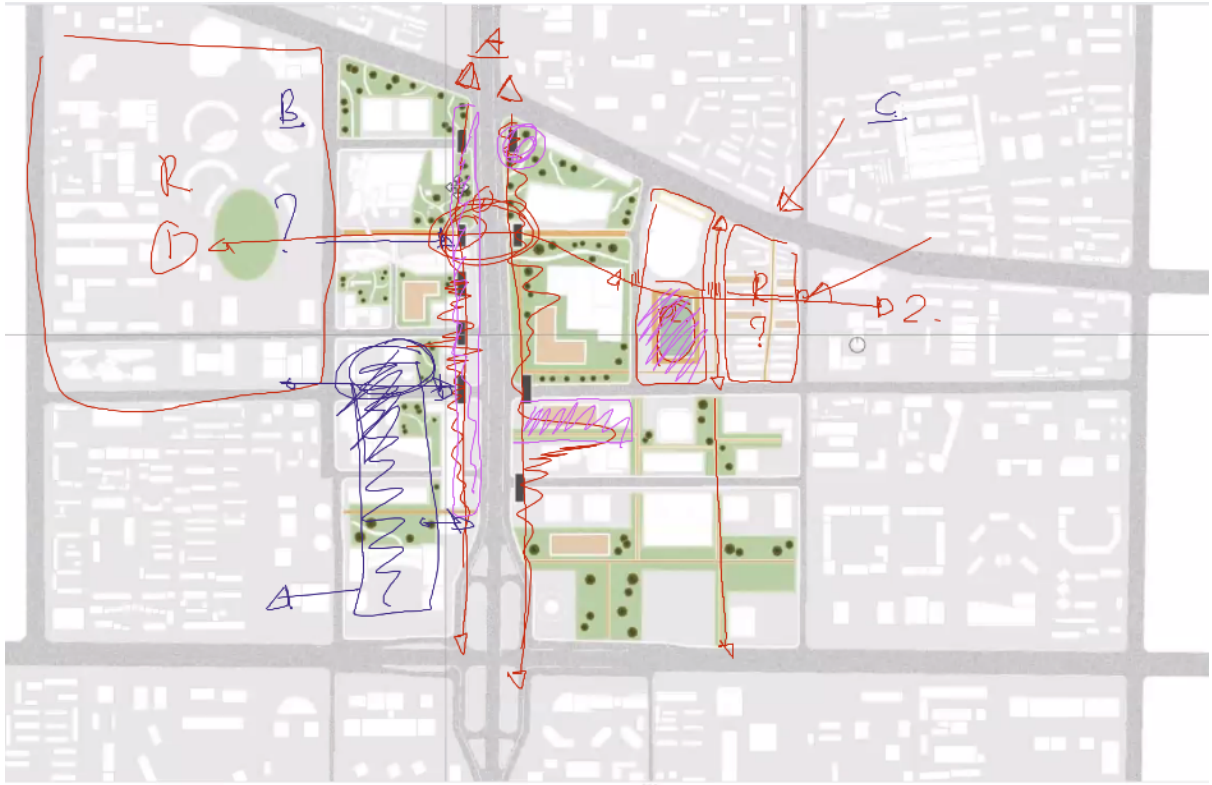
changes happen
in master plan



rich
Liu

wang's

Junior shanna

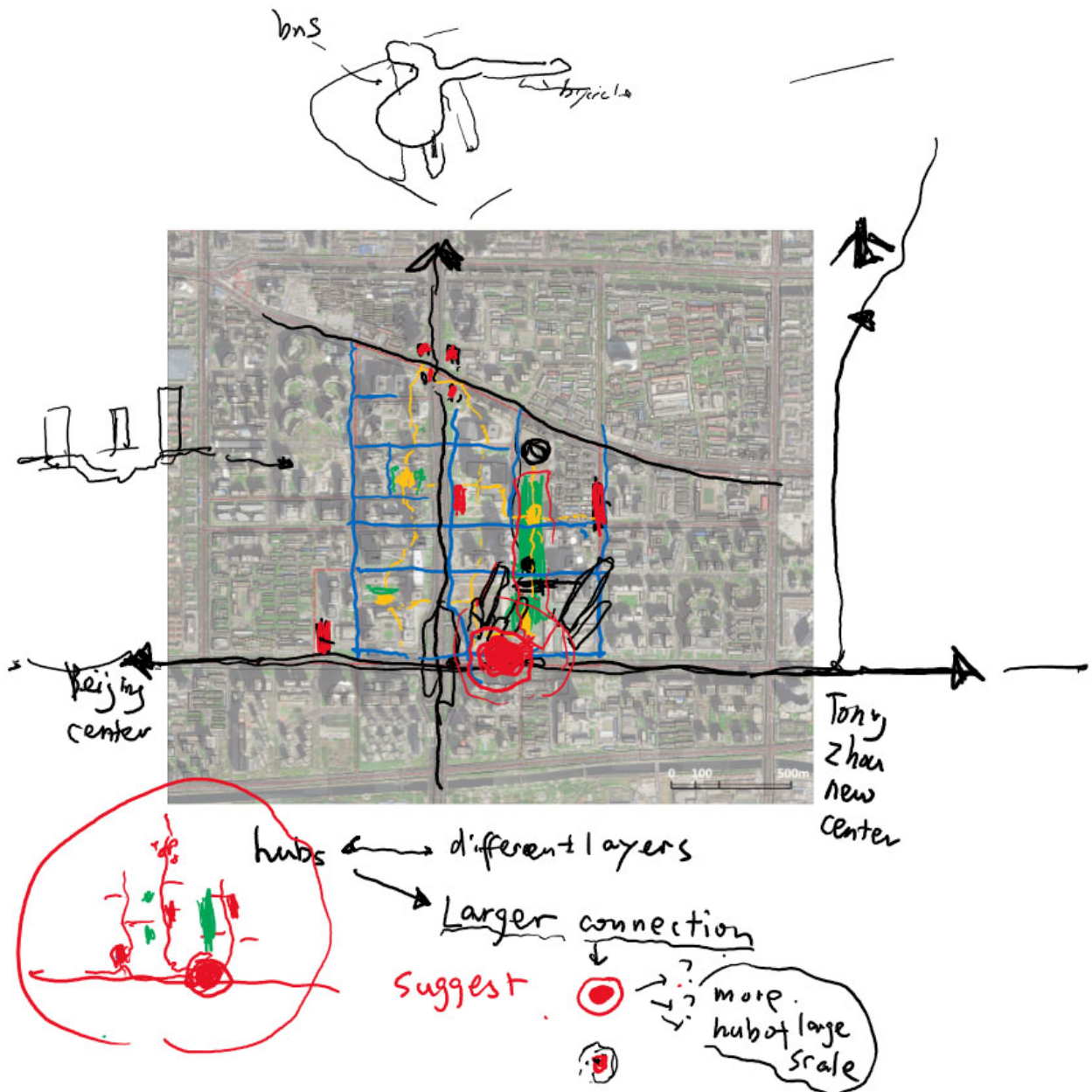


Group 3 - Mobility

presentation: mobility transfer nodes, bus station diversion, car diversion
presenter Katherine **Nathan** Lala Tsunxian

Remarks:

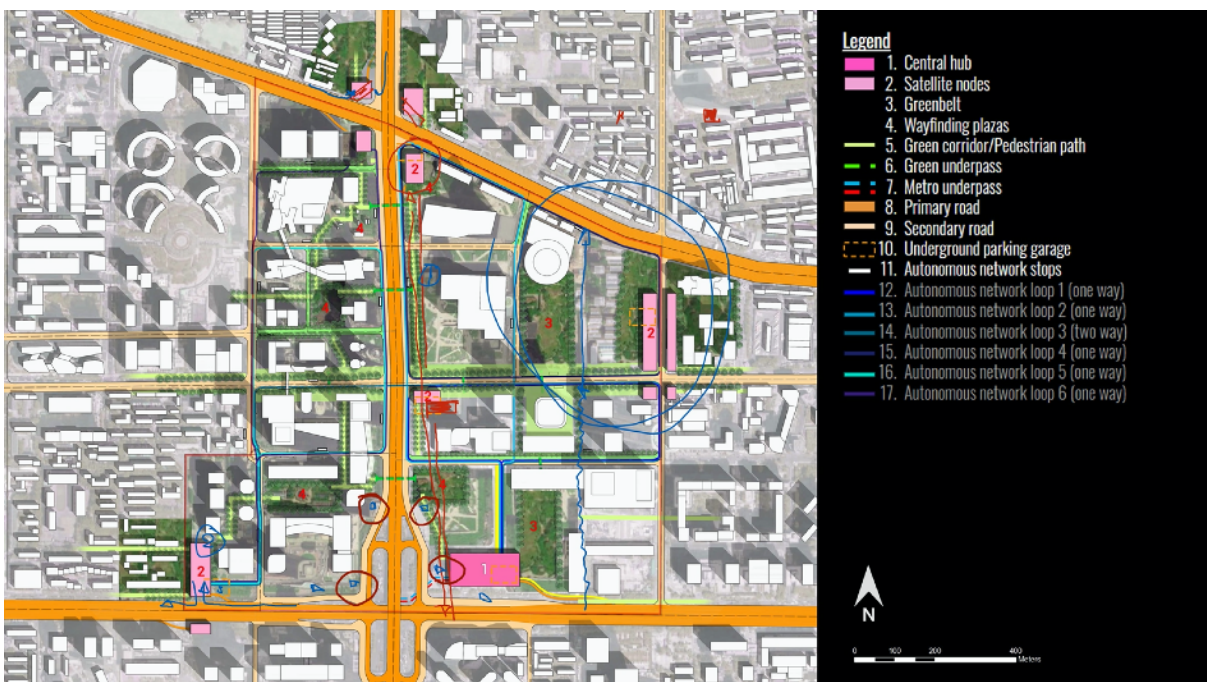
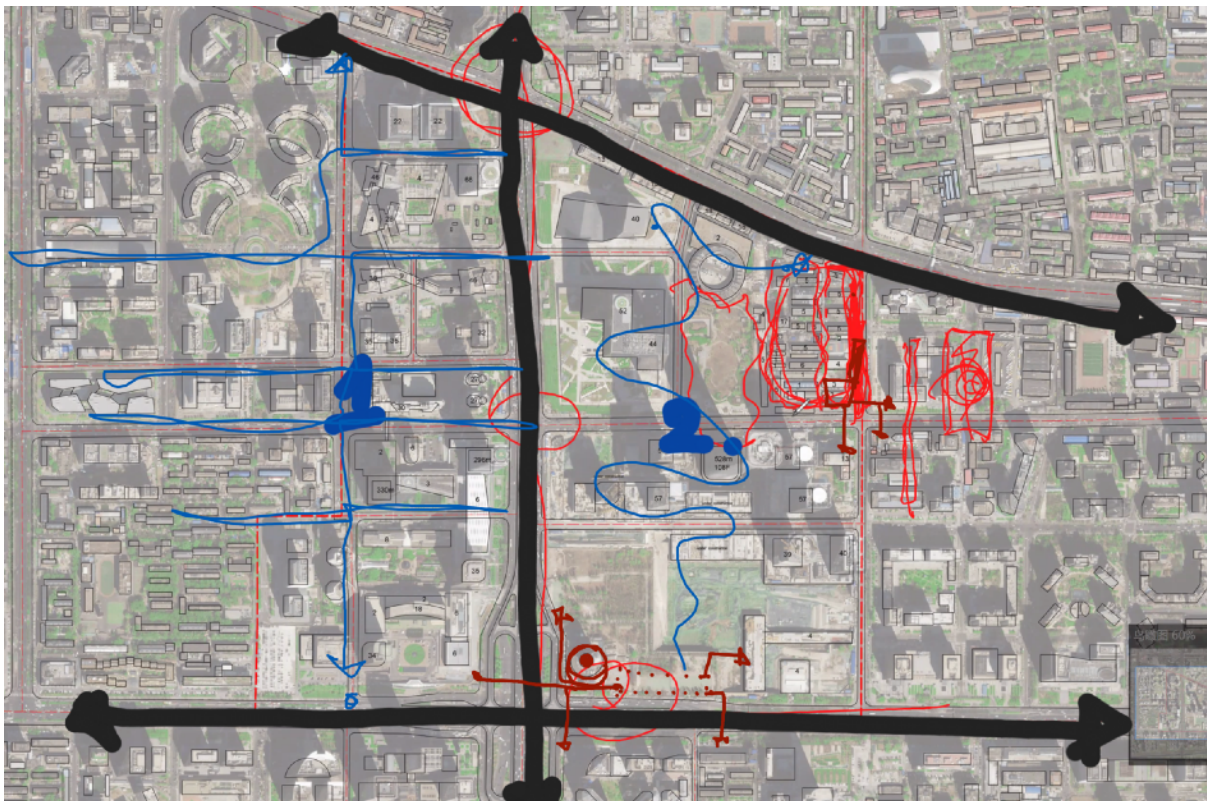
1. Beijing area (connection to the airport, tongzhou bus station/ new center, city scale transport node)
2. CBD urban area and the effect of your mobility principles on the urban area
3. Nodes



Mobility nodes is a good concept, but what is the effect on the concept of the future CBD?
 How about the digital innovation layer on mobility?

From Node to Hub: How to make it a real HUB

1. parking building / garage, metro direct access
3. buses to Yanjiao, tongzhou, and others
4. deliveries
5. airport / train station express
6. dedicated buses to some neighborhood
7. bikes/e-bikes



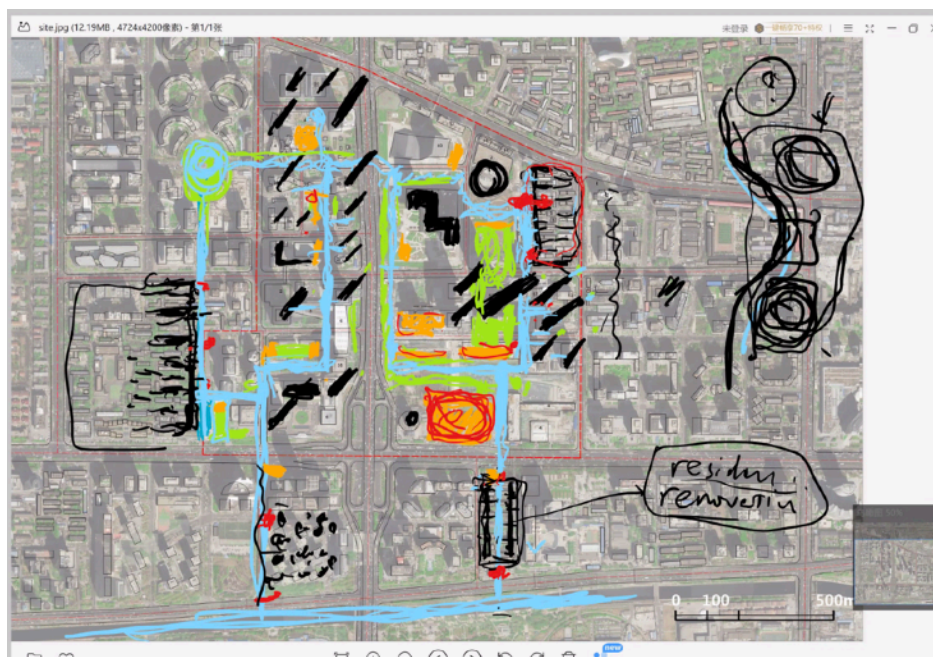
Group 4 + 5 Green Infrastructure / Public Facilities

Urban nodes as public open space. With underlying urban analysis.

Presenter: 1 Gabriel 2 Manuel 3 Stella 4 Thomas 5 Russel

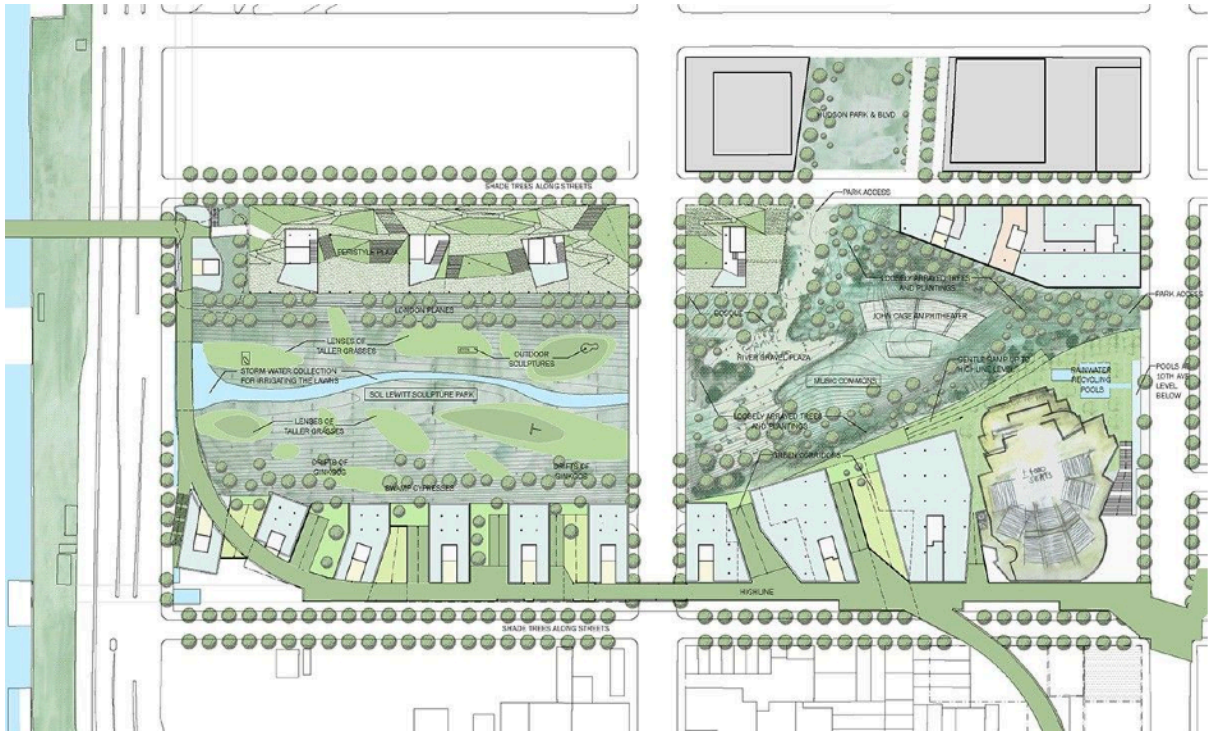
- Urban System as Third Ecology? How to rebuild or accomplish a more comprehensive eco-system. NYC: Highline and Central Park have this type and effect on the urban surrounding, because of their accessibility and connective ability.
- Make a one diagram strategy of your urban design approach: how does the urban service strategy relate to the green infrastructure? Can these two be overlaid?

-Green



Infrastructure: focus on stormwater and its dirty run-off in urban areas
Now there seem to be more ideas on green than on services.
'Rain Garden' Catch it if you can + Re-designing Cities to Function like Forests

Hudson Yards by Steven Holl



Group 1 - Work

Minhui Prera Benny Huiying

XD: will the future be about sharing and collaboration? Or will it be about separation, since in fact the office towers there are build to be very independent? Are we trying to connect? Or are we making in between spaces? Starbucks is a shared space, but this doesn't work often in a large scale environment. So, why do we need to connect everything?

We should question whether 'the free boundary is actually the right concept'.

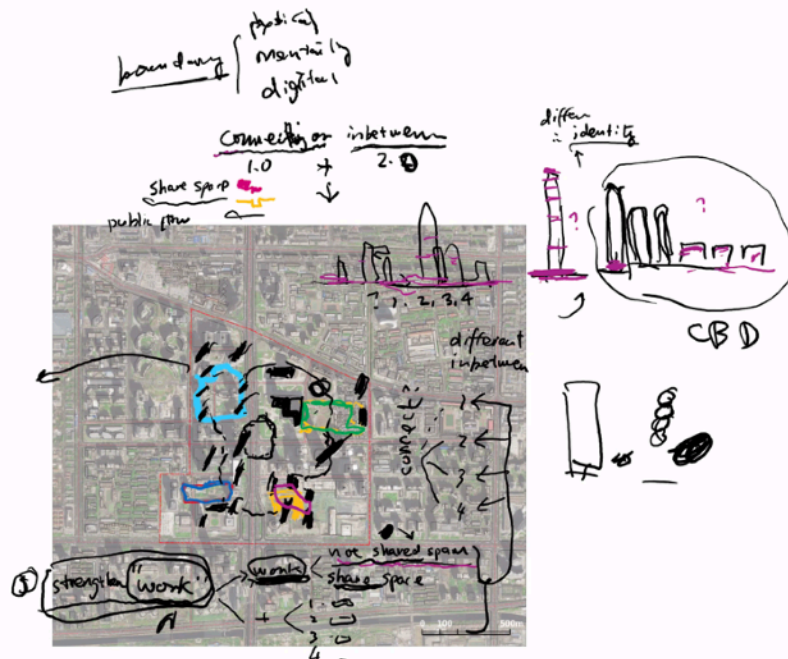
There should be a typology of working in this CBD area, these probably also need different supportive systems.

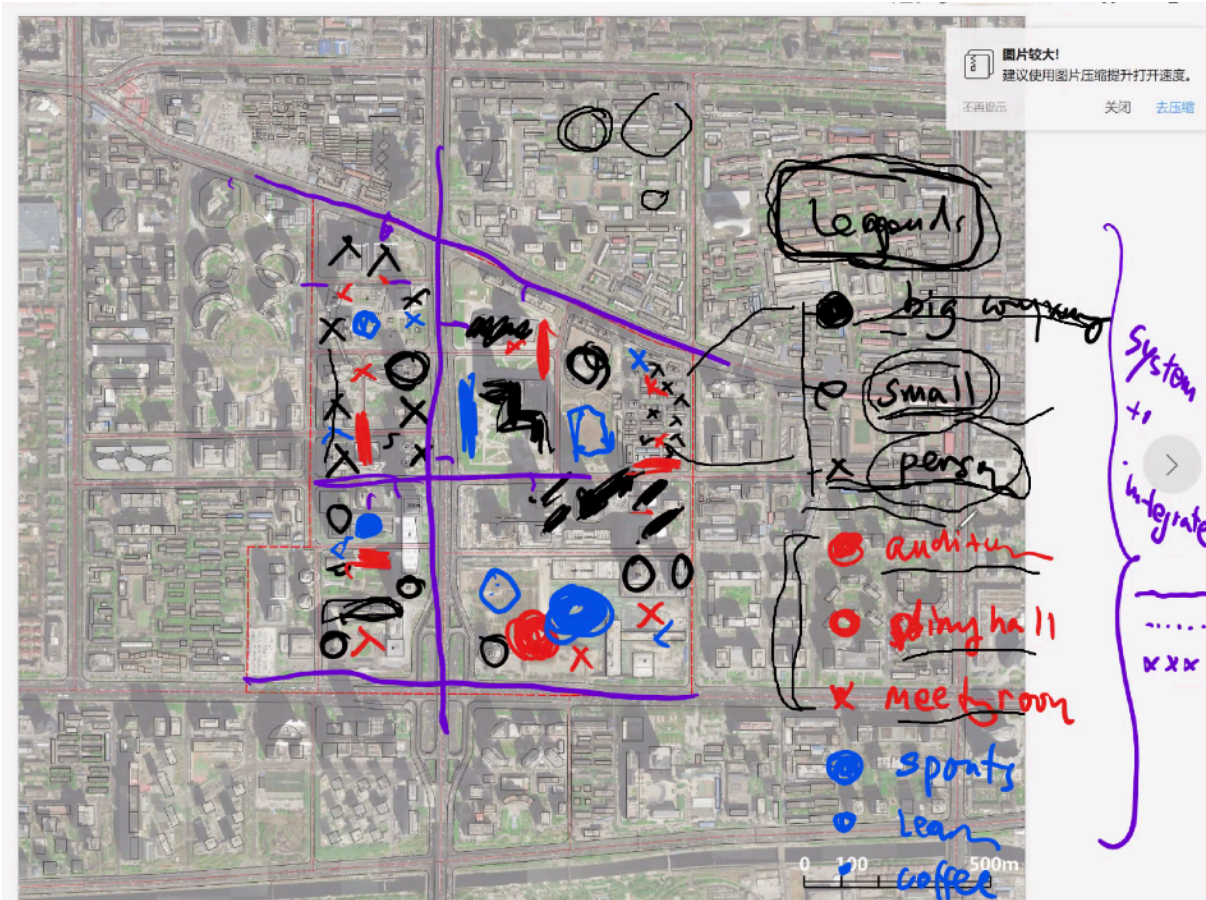
Remarks: Connect or In-Between?

-> to work on next, the combination of three elements important to your topic:

1. urban strategy
2. company type
3. spatial work typology

And strengthen the focus on 'work', and its spatial implications.





Proposed Masterplan – Zoning

