

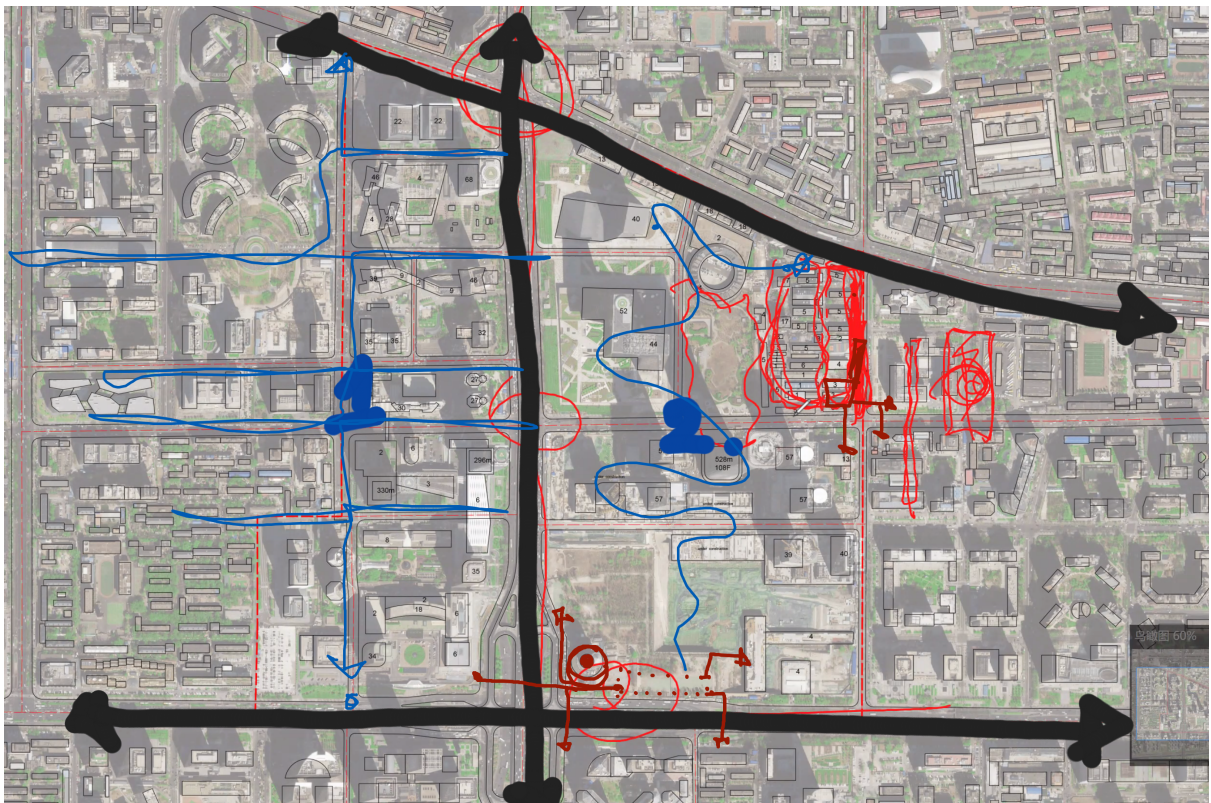
EPMA WK 7 - Tuesday March 31st

1 Mobility

Final review to start with Mobility Group

Make sure you have a compelling storyline that ties your project together. Integrate an exciting vision of the future of mobility, based on research from various groups and companies.

1. Start with urban scale interventions, scheme and diagram
2. Then go from the Beijing level to the effect of these interventions on your site, remember the diagram from below:



3. In your legend, or your presentation, suggest to separate the three layers of systems in separate layers.
4. Too much is borrowed from google's SIDE WALKS
5. How about the mobility of the CBD in different hours
6. CAV's perhaps could be parked further away, since they can be distributed through an on-demand system.
7. Theory of 'Complete street'

-> see also the links, images and documents in our WeChat group.

<https://www.mckinsey.com/industries/automotive-and-assembly/our-insights/the-future-of-mobility-is-at-our-doorstep>

2 Public Green & Services

Start story with Beijing climate analysis, and problem statement with flooding problems. Then, introduce green spine, four supermanzanas, and explain how to add public services along the new spine. Use the analogy of the Beijing Lakes and water system! Historic lakes -> Olympic Park -> CBD

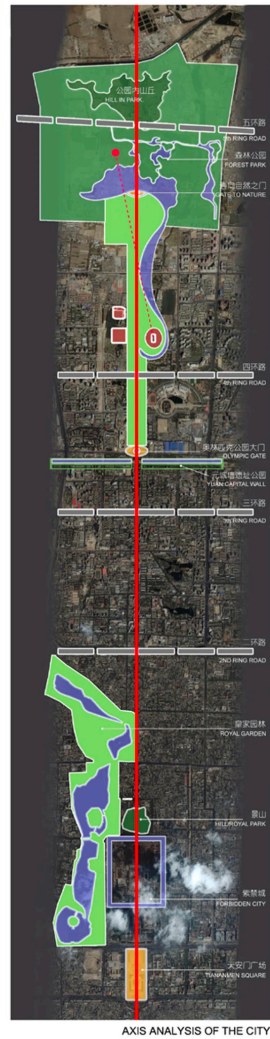
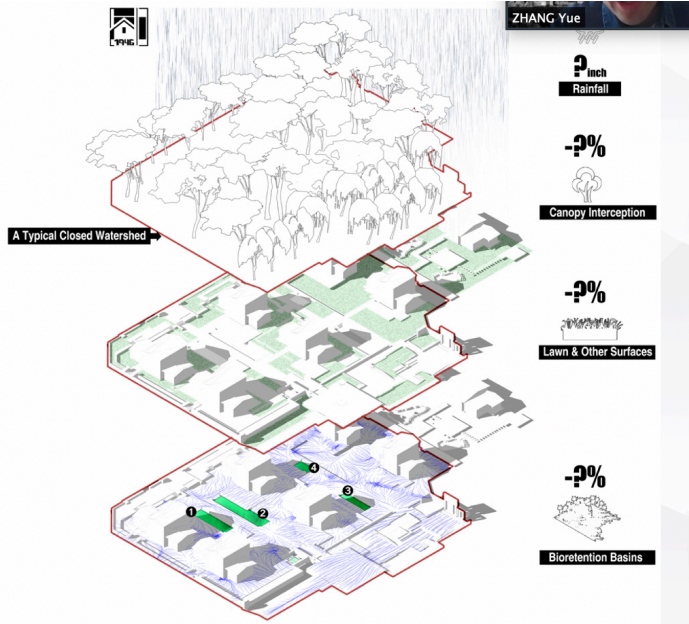


1. Create Legend with index for various, more detailed layers of public service and green.
2. Differentiate the different layers/ elements of various 'green elements'.
3. Include the 'local' layer in your green layer through the use of specific trees and plants that stimulate local biodiversity.
4. To highlight CBD's nature (SPONGE CITY), go back to look for other related case studies of CBD in the world, like canals/waters in Canary Wharf at London East
 - * Ice rink for skating in winter
5. To verse services in GREEN and BLUE (nature) — sure we also have services in existing buildings and open spaces
6. To recall the topic: sharing, future, topics (nature and future are both important)
 - * Sharing in between various dimensions: time, space, people group, tech/nature

Research Site

The monitoring site *Shengyinyuan* is a campus green space which can be seen as an endorheic basin (58848sf). 62% of the site is covered by 4 kinds of canopy trees. Due to the serious waterlogging problems after rainfall events, 4 bioretention gardens were designed to reduce surface runoff.

Monitoring design in this site should avoid affecting the normal use of the space and all the sensors need independent outdoor solar power supply (12V) for safety reasons.



3 Work

You need a story.

A comprehensive, clear, concise, creative, compelling story.

This story should consider the changes in the working landscape, and from there drive your site interventions.

For your group, you would need more emphasis on the changing working landscape 'inside the building envelope'.

1 What will the work of CBD be looking like, to better understand?

As a firm, several choices to choose place for office, SOHO, suburb office park, CBD, else

What differences between CBD work and other place to work? live work play together?

Do we need a whole office building

What differences or various choices of large companies and small companies

2 TODAY: Deriving the typology of future work step by step, from a seat/cell to a floor to a building to an industry park for offices (regenerate existing office buildings and other buildings, as well as create new office buildings)

Create, rather imagine, the future using architecture language

How to justify: cases to support, data driven, problem driven, common sense?, and CREATE

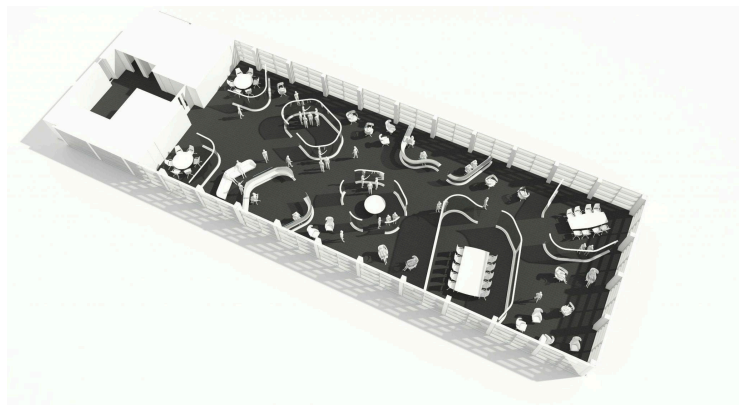
3 Seat organization to show? or we do not need seats in CBD anymore?

Sure, we need a whole story

Some of the links I showed:

<https://www.raconteur.net/the-future-workplace>

<https://medium.com/@yiyihan/the-future-of-workplace-and-the-human-element-7c6a6a471466>



4 Residential

Good development. Work on your story now.

Start with the comparison of a lack of residential when compared to other world wide CBD's.

Then, consider

1. from an urban perspective, how does your typologies add to other typologies of the area?
2. what is the rational behind your new additions
3. what is the unit-type build up/ count. -> find data to support your design scheme changes

Other remarks:

1. What will the living be looking like in (close) future? Especially homes in the central area of CBD
 - * Future life style (more equal or segregated in social dimension?)
 - * Existing community are segregated in social class (income in China and race in some countries)
 - * Living in office?
 - * How about the physical form of it? Tower, small units, gated or non-gated community,
 - * Who are the residents?
 - * More functions in a neighborhood
 - * Larger area required
 - * Smart home, floor, building and neighborhood
 - * More closed or open?
 - * Include more nature?
2. To justify our design for future living function of city
 - * Case study informed
 - * Problem driven
 - * Data augmented
 - * Future oriented
3. The storyline
 - * Where is the poor / rich, people in the towers you designed, in various levels?
 - * How about the future/sharing element in the design
 - * SYSTEM: How to make it an urban design rather a residential community design
 - * How about public space, as this is an urban design studio
 - * ZOOM INTO: Analyze the whole site, to find opportunity space, and zoom into the design sites